

Introduction to World Geography



What is Geography?

**Write your own
definition.**



What is Geography????



- Geography is the study of **place and space**: Geographers look at *where* things are and *why* they are there.

AND

- Study of **human activity**, the **natural environment**, and the **relationship** between the two (human-environment interactions).



Physical v. Cultural Geography

Physical Geography	Cultural Geography
Rocks/Minerals	Population/Settlements/ Urbanization
Landforms	Economic and Political Systems
Animal and Plant Life	Transportation
Soils	Human Migration
Atmosphere/Climate/Weather	Social Systems
Environment	Recreation
Rivers/Oceans/Other bodies of Water	Religion/Belief System



Physical Geography is the study of the *Natural Landscape* of the Earth while Cultural Geography is the study of the *Human Landscape* of the Earth.

CLASSIFICATION SYSTEMS

Biologists



Taxonomy: kingdom, phylum, Class, order, family, genus, species

Geologists



Geological time

Historians



Eras, ages, periods

Geographers → Geographic Regions



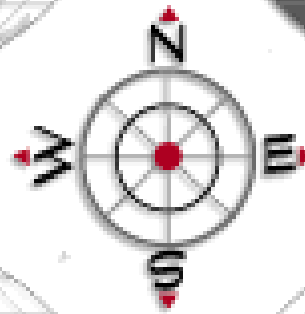
Hemispheres

(half of the earth)

Northern Hemisphere



Western Hemisphere



Southern Hemisphere



Eastern Hemisphere



The Grid System

▶ A globe with lines

- Equator
- Prime Meridian
- Latitude
- Longitude



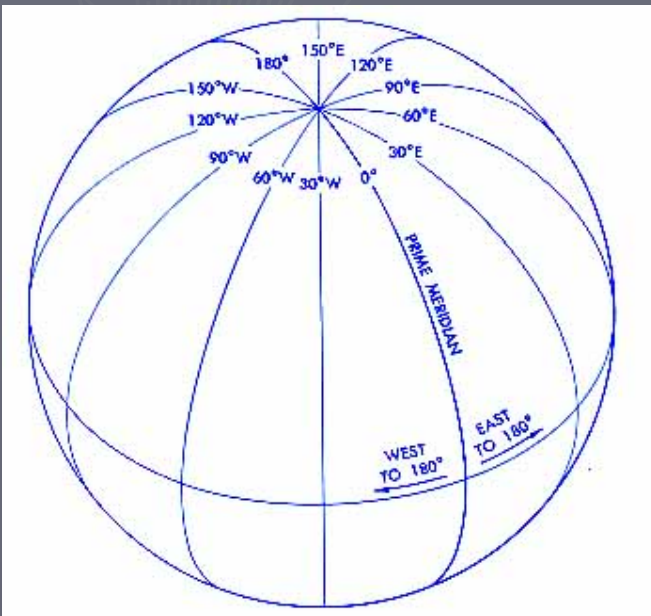
The Grid System

- ▶ **Latitude**: Lines of latitude run horizontal around the globe or a map. They are designated as either North or South of the Equator.
- ▶ **Longitude**: Lines of longitude run vertically around the globe or map. They are designated as either West or East of the Prime Meridian.



Only one line!

- ▶ equator – a middle line on the Earth from east to west. It is at 0° latitude.
- ▶ prime meridian – a middle line on the Earth from north to south. It is at 0° longitude



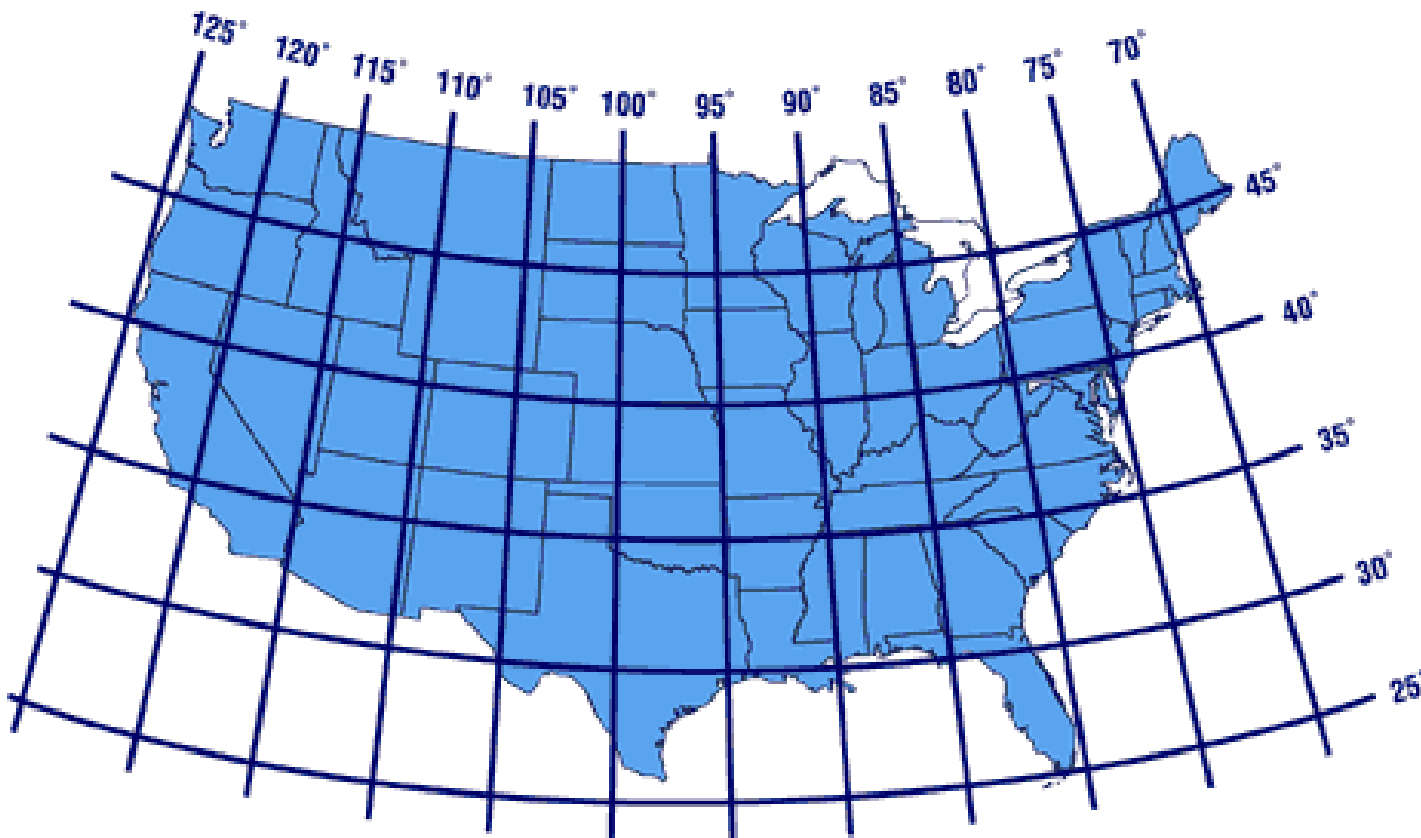
Coordinates

(numbers for latitude and longitude)

What are the coordinates for: Texas - 33°N, 100°W

Florida - 28°N, 83°W

New York - 44°N, 75°W



GEOGRAPHIC REGIONS: What defines a region (place)?

Regions (places) are based on Spatial Criteria

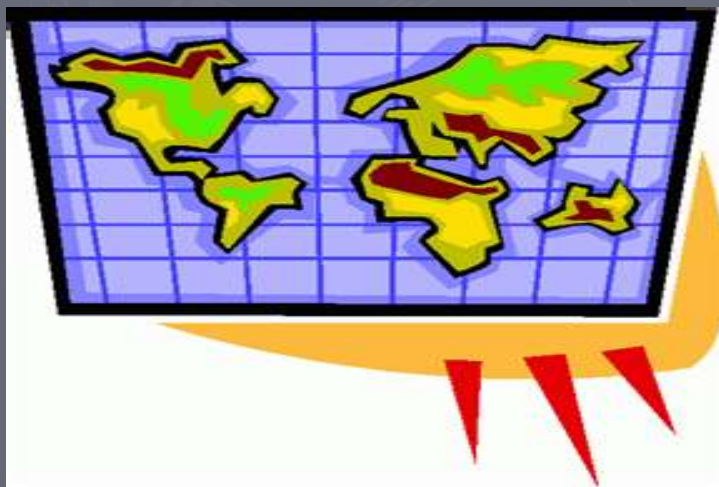


- ▶ physical (natural) characteristics
 - landforms, climate, vegetation
- ▶ human (cultural) characteristics
 - language, religion, ethnicity, population



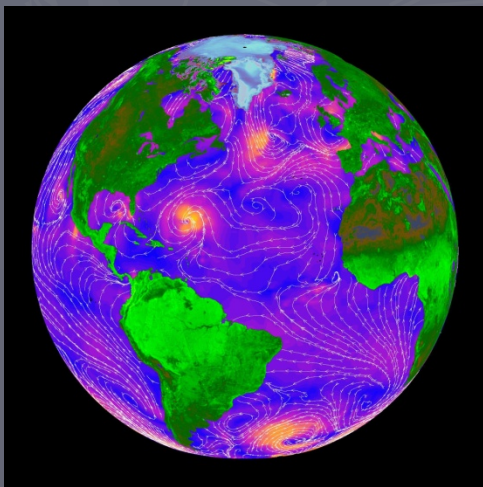
MORE ON GEOGRAPHIC REGIONS:

- ▶ Regions change over time.
- ▶ Regions do not have definite borders, but rather are separated from other regions by transition zones.



Properties of Regions

- ◆ Area
- ◆ Boundaries
- ◆ Location



FORMAL REGION

- ▶ Marked by a certain degree of similarity in one or more characteristics (based on facts)
- ▶ Example: Latin America, Europe



FUNCTIONAL REGION

- ▶ A region organized around a set of interactions and connections between places. (places connected by transportation or other means)



Example: Metropolitan Area

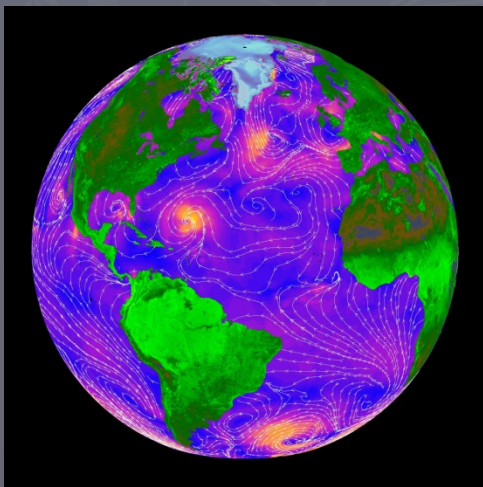
Perceptual Region

- ▶ Region in which people perceive the characteristics of the region in the same way (based on human attitudes about a place).
- ▶ Example: American Midwest



Two ways to find a place

- ◆ Absolute location
- ◆ Relative location



Absolute Location

(the exact location)

Texas's location is 33° N, 100° W.

OR

Texas is next to Mexico.

Relative Location

(another place near to the location)

Ms. Campero's classroom is next to water fountain.

OR

Ms. Campero's classroom is #113.

Which is absolute location?

TSD is in south Austin.

OR

TSD is at 1102 S. Congress Ave.

Which is relative location?

TSD's middle school is between Heritage Center and High School.

OR

TSD's middle school is north end of the building.

Tools



Do we have Geography tools?



Map

Cartography (map making)

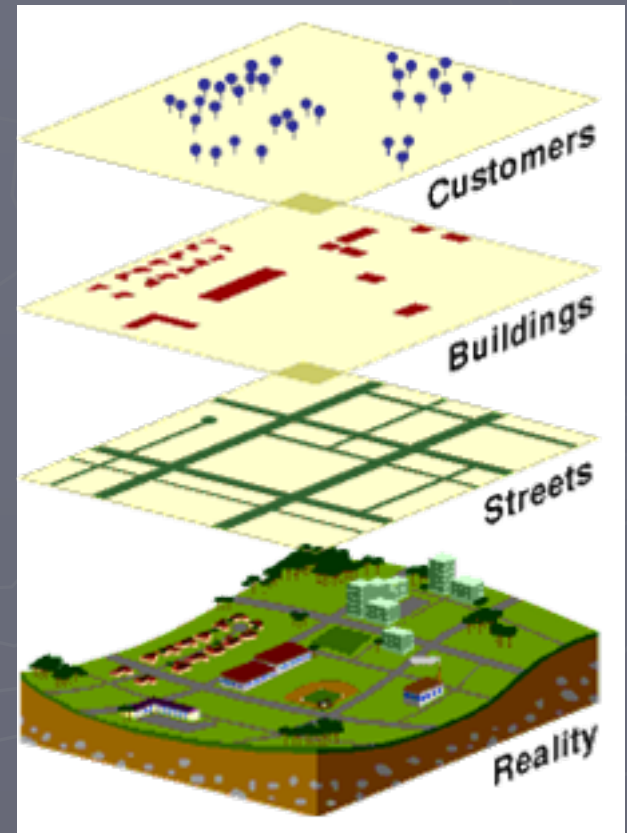


YES!!!



Globe

Compass



Geographic Information System (GIS) – separates areas to see more information

Maps & More Maps

- ▶ Maps are geographers' most common and useful tool
- ▶ Types of maps and projections
 - Physical maps
 - Political maps
 - Special Purpose maps
 - ▶ Cultural characteristics: Population density, infant mortality, literacy, GDP, etc.
 - ▶ Physical characteristics: Climate, Vegetation, Precipitation, etc.
- ▶ Why do geographers use each type map?



Vocabulary!!!!

