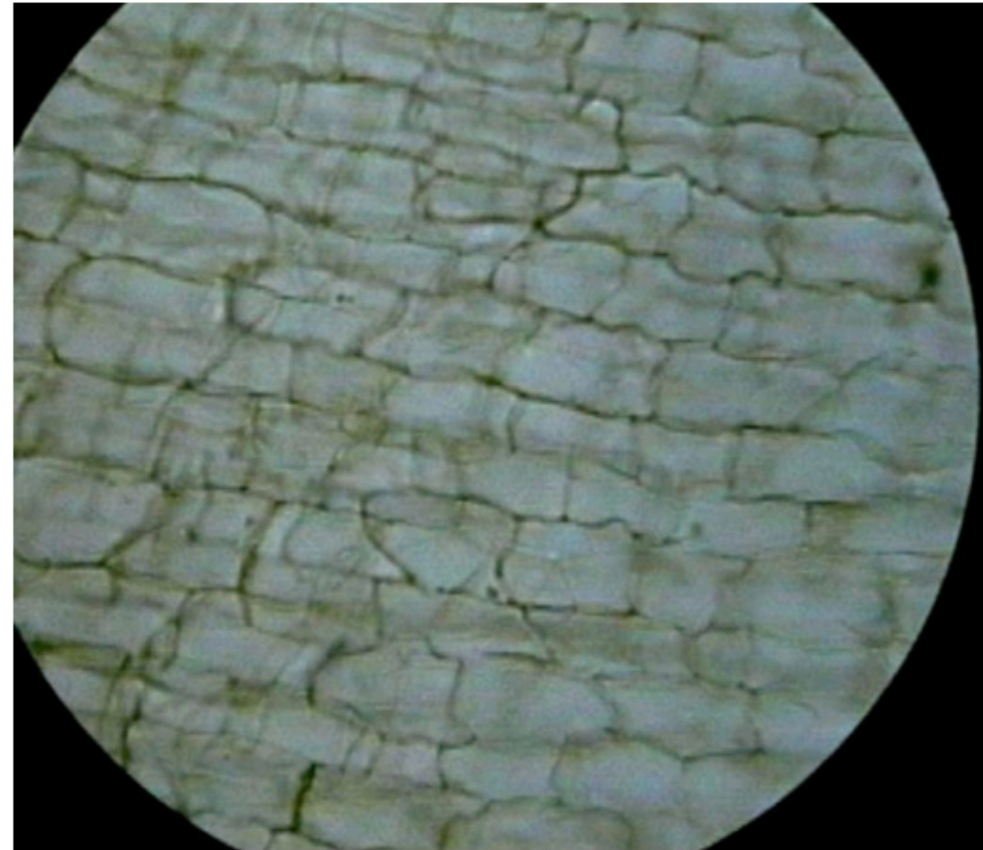


Question 1 of 5

What structures are referred to as the building blocks of life?

- A. bricks
- B. ribosomes
- C. cells
- D. plasma membranes



Check Answer



Question 2 of 5

What tool is used to make tiny objects appear larger?

- A. stethoscope
- B. microscope
- C. centrifuge
- D. laser



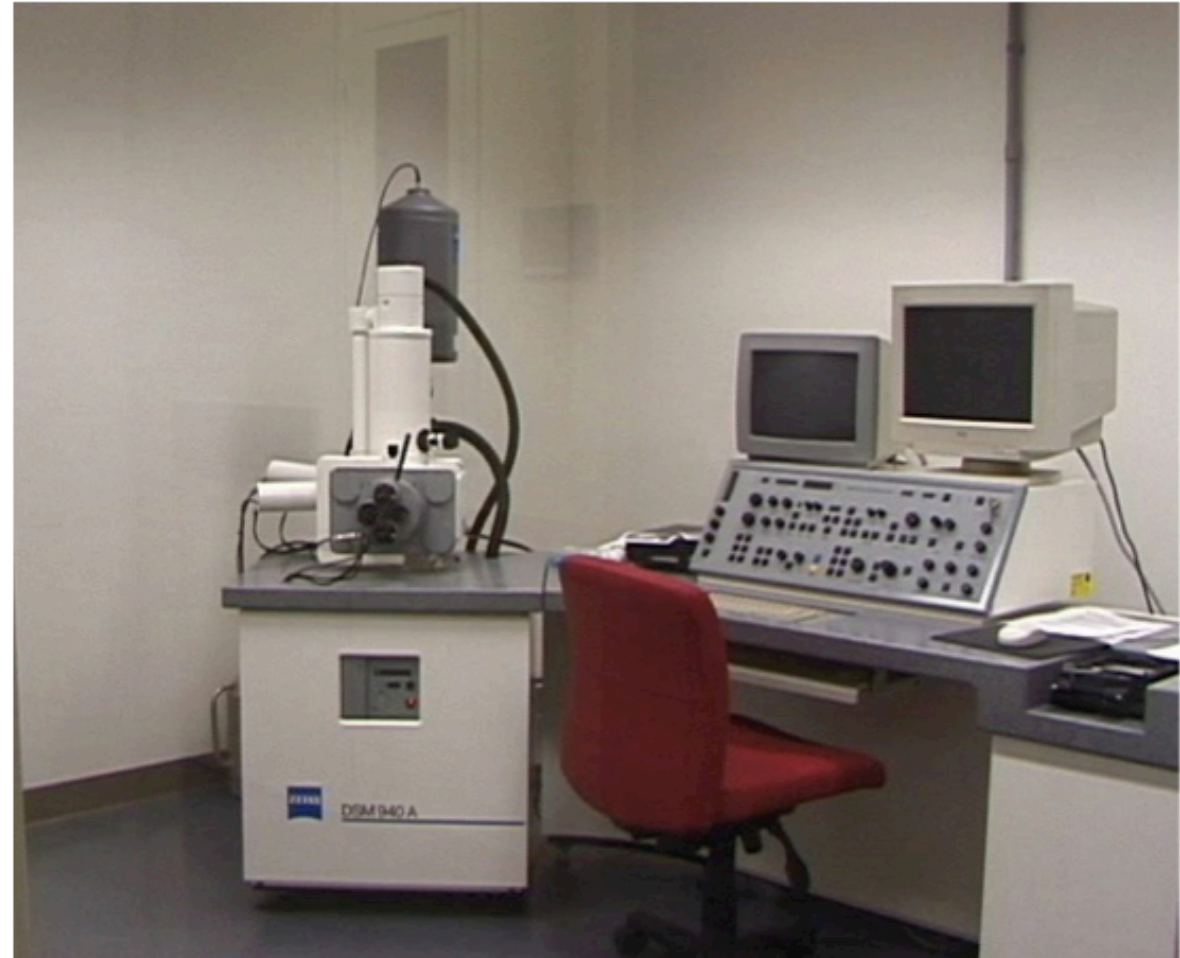
Check Answer



Question 3 of 5

Electron microscopes use beams of the following to magnify objects:

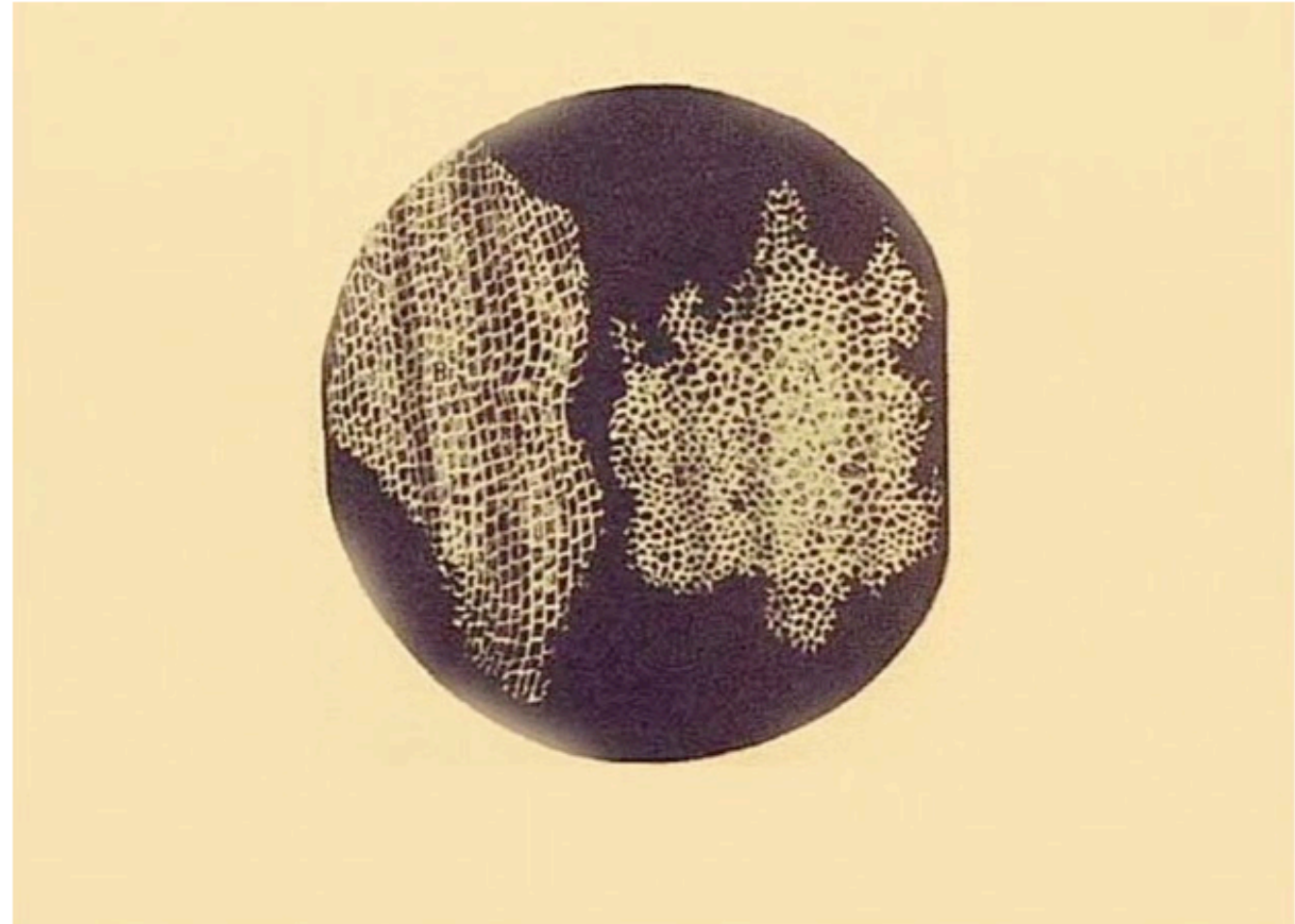
- A.** electrons
- B.** light particles
- C.** protons
- D.** nuclear particles

[Check Answer](#)

Question 4 of 5

What was the scientist Robert Hooke credited with first discovering?

- A. blood
- B. gases
- C. atoms
- D. cells



Check Answer



Question 5 of 5

Antonie van Leeuwenhoek is credited as the first person to see what?

- A. living cells
- B. dead cells
- C. electrons
- D. atoms



Check Answer



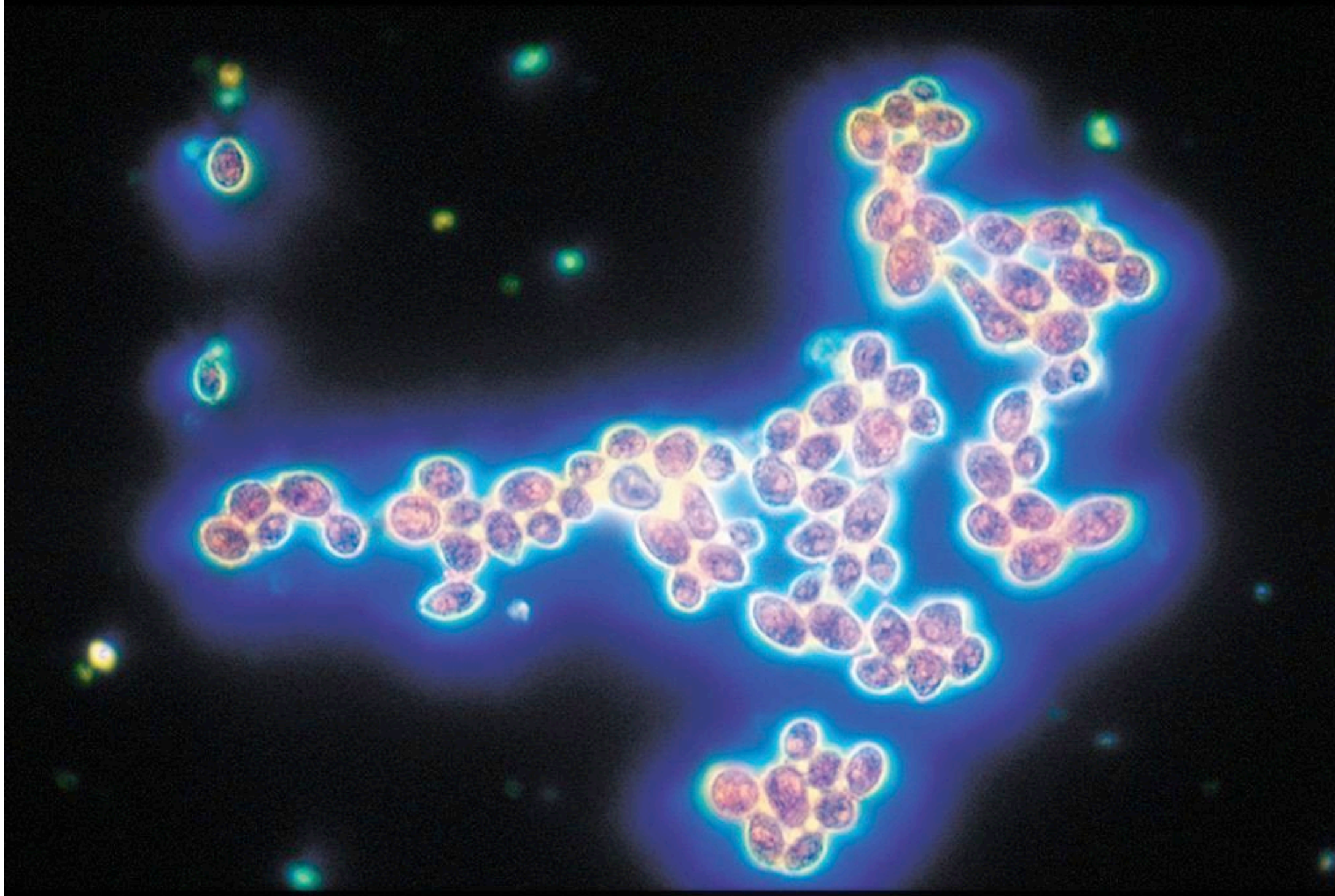


FIGURE 1.3 Transmission Electron Microscope





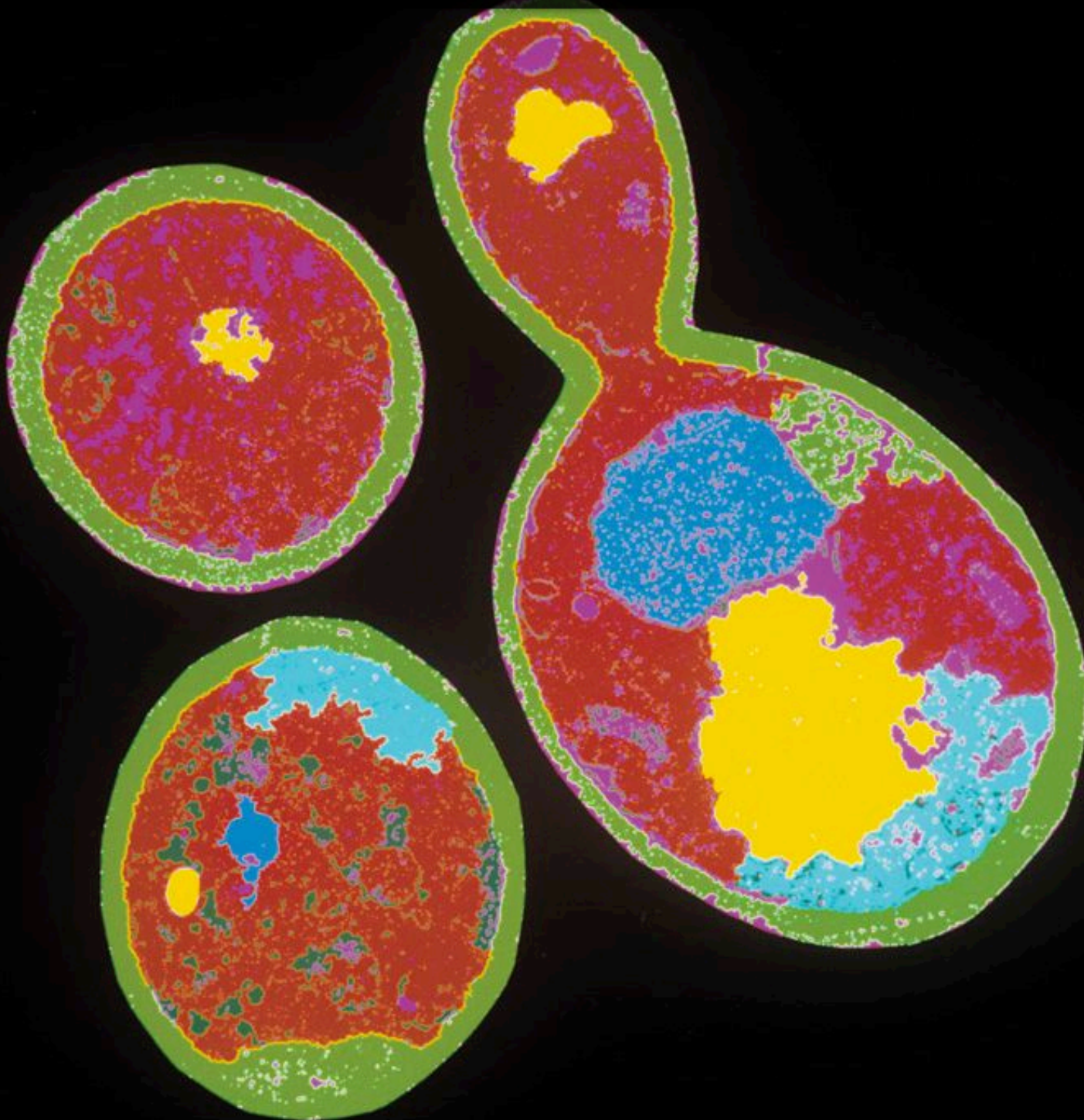
FIGURE 1.4 Micrographs: Different types of microscopes can be used to examine cells.



Yeast cells shown in a light micrograph.



FIGURE 1.4 Micrographs: Different types of microscopes can be used to examine cells.



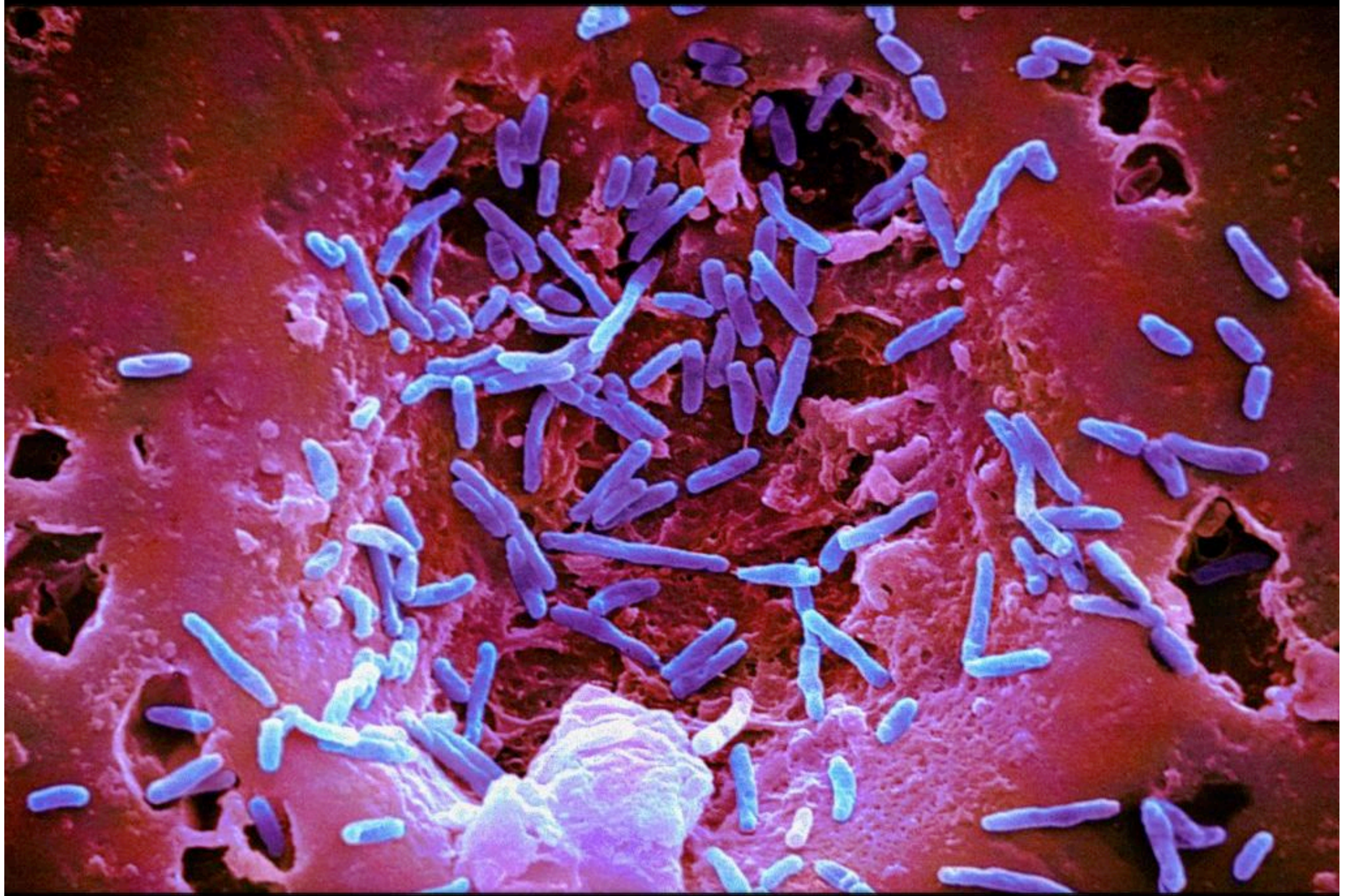
Yeast cells shown in a transmission electron micrograph.



FIGURE 1.4 Micrographs: Different types of microscopes can be used to examine cells.



Yeast cells shown in a scanning electron micrograph. **Infer** If scientists were studying a structure found on the surface of yeast, which kind of microscope would they likely use?



Scanning electron micrograph of *Mycobacterium chelonae*