

HOW TO GET TO COLLEGE



www.gotocsu.com



6-8TH GRADES

- Take **English and Algebra I** or another rigorous math course and aim for good grades.
- Take a **language other than English**.
- Begin your student planner on www.csumentor.edu.



9TH GRADE Freshmen

- Take the "a-g" courses listed below to meet the CSU's admission requirements: Algebra I or Geometry, college prep English, and a foreign language.
- Aim for **As and Bs in all your classes**; focus on homework and develop good study skills.
- Take the **ACT EXPLORE exam**, a tool that helps you plan for high school and college.
- Begin or update your high school course planner on www.csumentor.edu.



10TH GRADE Sophomores

- Take **Geometry or Algebra II**.
- Take college prep **English**.
- Take the **PLAN and PSAT exams** that help you prepare for the ACT and SAT and keep you on track for college.
- Take courses from the "a-g" course list: History, English, math, visual and performing arts, laboratory science, and a foreign language.
- Update your high school course planner on www.csumentor.edu.

How to PAY FOR COLLEGE

- See if you qualify for financial aid: www.fafsa.ed.gov
- You may also be eligible for a Cal Grant: www.calgrants.org
- Check out the many scholarship opportunities: www.scholarships.com
- Learn how to save for college: www.scholarshare.com

"a-g" 9th-12th Grades COURSES

The California State University requires the following college preparatory pattern of classes (referred to as the "a-g" courses) for admission:

- a **HISTORY AND SOCIAL SCIENCE** 2 years (1 year of U.S. History and 1 year of Social Science)
- b **ENGLISH** 4 years required
- c **MATH** 3 years (4 years recommended)
- d **LABORATORY SCIENCE** 2 years with a lab class
- e **LANGUAGE OTHER THAN ENGLISH** (Foreign Language) 2 years of the same language
- f **VISUAL AND PERFORMING ARTS** 1 year
- g **COLLEGE PREPARATORY ELECTIVES** 1 year of any college preparatory subject

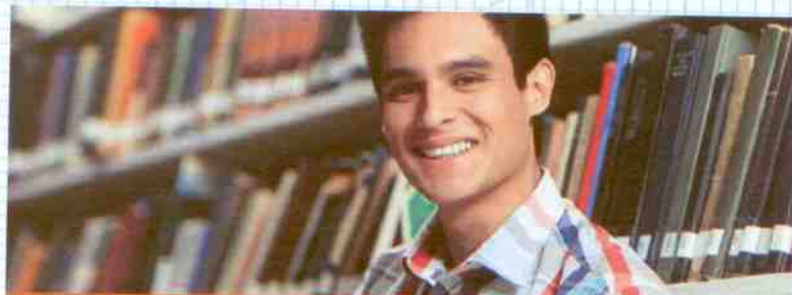
Visit your school counselor for a detailed list of classes or visit www.gotocsu.com.

you
can
do it!



11TH Juniors GRADE

- **Take advanced math and college prep English:** Algebra II or advanced math and English (writing and critical reading).
- **Review the "a-g" classes** you still need to take for CSU admission with your counselor.
- **Update your high school course planner** on www.csumentor.edu.
- **Take the EAP exam** to find out if you are ready for college-level math and English courses. Visit www.csusuccess.org.
- **Register for the AP exams in the spring.** You can earn college credit if you score well on the test(s) and will be exempt from taking the EPT and ELM.
- **Register for the PSAT** if you didn't take it in 10th grade.
- **Register for the SAT or the ACT at least one month before the exam.** Many CSU campuses require you to take the exam by October of your senior year.



12TH Seniors GRADE

- **Complete all final "a-g" course requirements**, including advanced math and college prep English. Trigonometry or Analytic Geometry/Calculus are also recommended.
- **If your EAP test results indicate that you are "Ready-Conditional" for college-level mathematics**, you are required to take a 12th grade math course with a prerequisite of Algebra II and earn a grade of "C" or better to maintain your exemption.
- **If you are planning on transferring** from a California Community College, please visit the CSU's website for transfer pathways: www.calstate.edu/transfer/roadmaps.
- **If your EAP test results indicate that you are "Not Yet Ready for college-level math or English courses,"** visit www.collegeeap.org to practice your math or English skills. This may increase your chances of passing the CSU's placement tests.

EARLY SEPTEMBER:

Register for the October SAT or ACT.

OCTOBER 1-NOVEMBER 30:

Apply to the CSU early—the deadline is November 30!
Begin to apply for scholarships.

JANUARY-MARCH:

Apply for financial aid by March 2 (www.fafsa.ed.gov).

MARCH-MAY:

Prior to enrolling, register for the CSU's ELM and EPT exams (unless you are exempt).

LATE SPRING:

Students taking AP classes should register for the AP exams.




ABBREVIATIONS

ACT (American College Testing)
AP (Advanced Placement)
CSU (California State University)
EAP Exam (Early Assessment Program Exam)

ELM (Entry Level Math)
EPT (English Placement Test)
PSAT (Preliminary Scholastic Assessment Test)
SAT (Scholastic Assessment Test)

 **BOEING**
www.boeing.com/education
Investing in Student Achievement

 **SCHOLARSHARE**
CALIFORNIA'S 529 COLLEGE SAVINGS PLAN
Learn how your family can save for college.
www.scholarshare.com