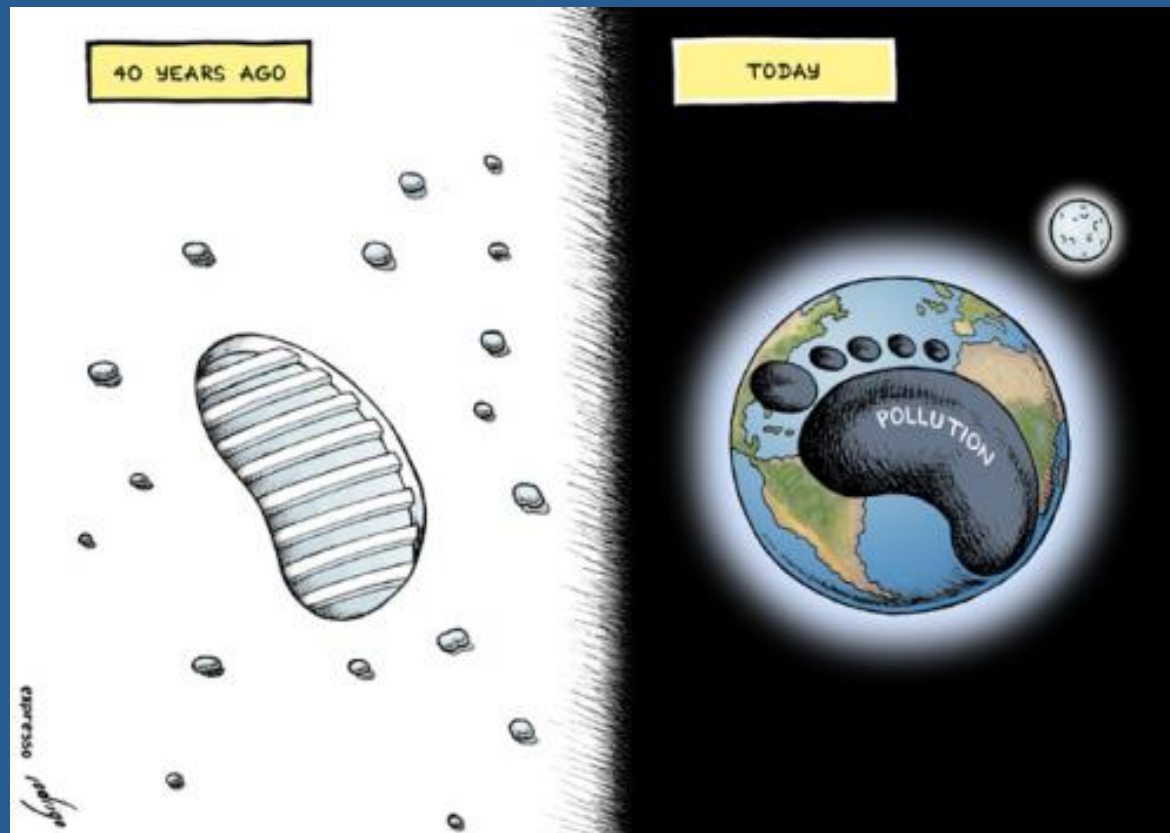


# Human Geography



# What is Human Geography?

- a branch of geography that focuses on the study of patterns and processes that shape human interaction with the environment
  - *Physical*
  - *Cultural*

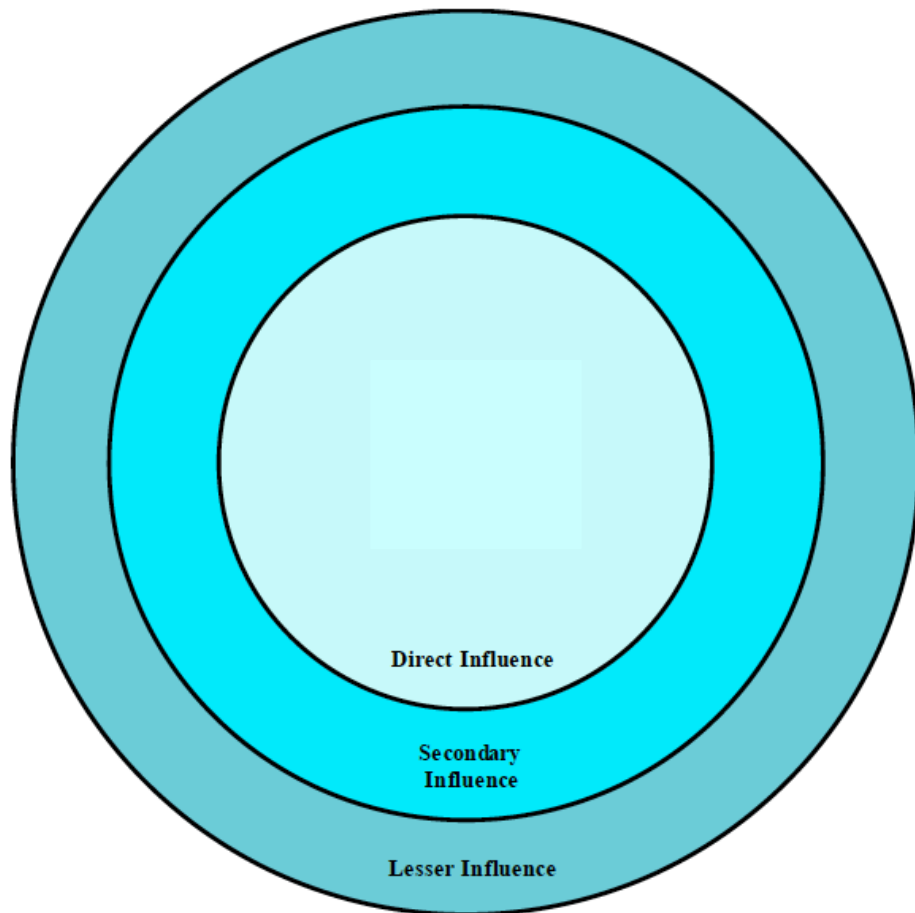


# PATTERNS & DISTRIBUTIONS



Where would you settle?

# Factors that Influence Settlement



## Direct Influence:

Trade/Economic Activities

## Secondary Influence:

Physical/Climate and Technological  
(water, soil, agricultural, climate, resources, transportation)

## Lesser Influence:

Cultural Ties

(language, history, ethnicity)

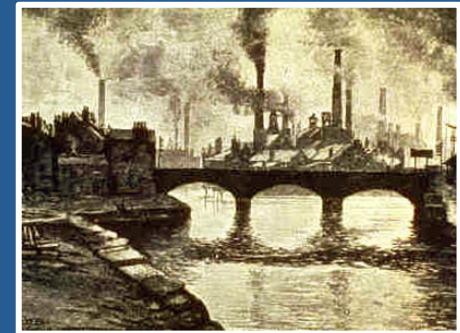
## Various:

Others

(war, diseases, etc.)

# Migration and Immigration

- Political
- Economic
- Social
- Environmental



# Changes in Settlement Patterns

- Urbanization
- Transportation
- Access to and availability of resources
- Economic activities
- Access to source for food and water
- Push/Pull factors

# Push and Pull Factors

- the push factor involves a force which acts to drive people away from a place
- the pull factor is what draws them to a new location

## Push-Pull Factors of Immigration



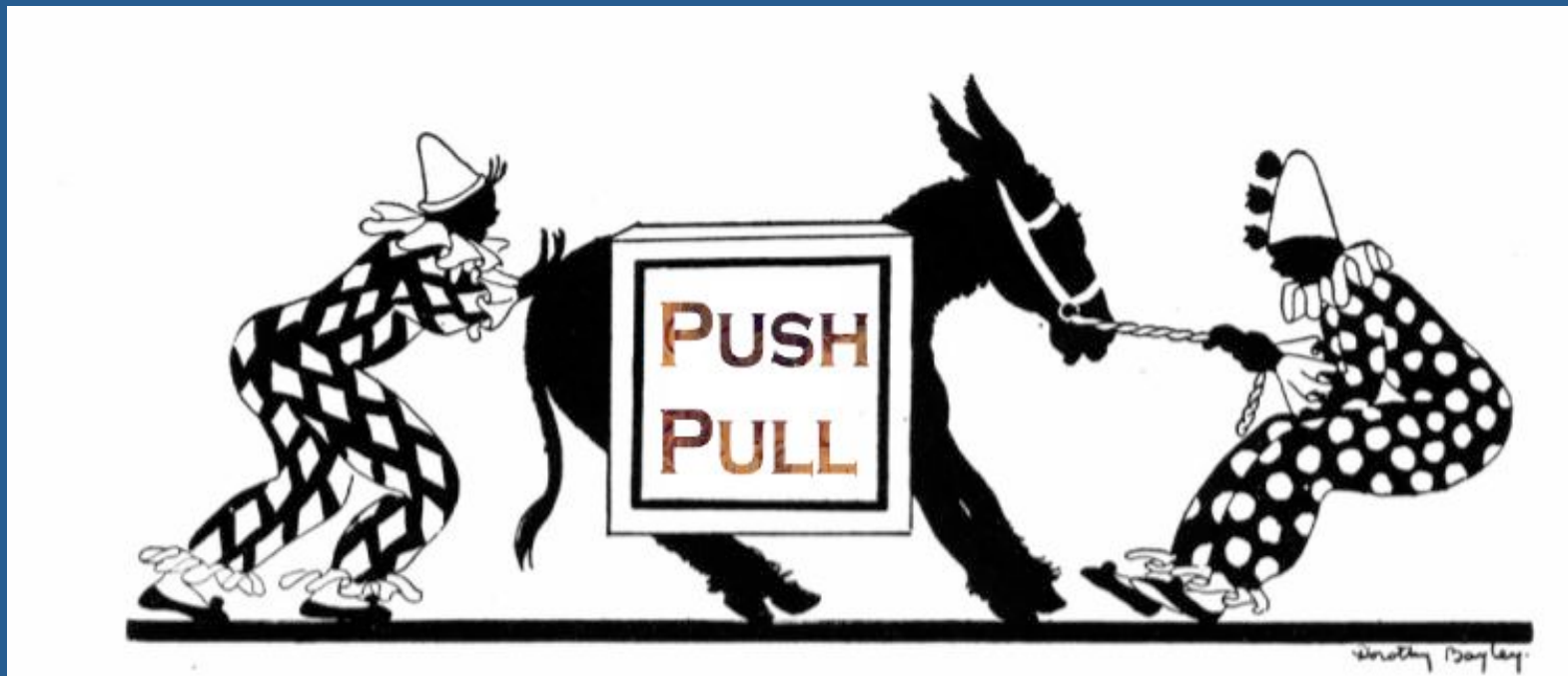
- 1. Freedom**
- 2. Economic opportunity**
- 3. Abundant land**



- 1. Population growth**
- 2. Agricultural changes**
- 3. Crop failures**
- 4. Industrial Revolution**
- 5. Religious and political turmoil**



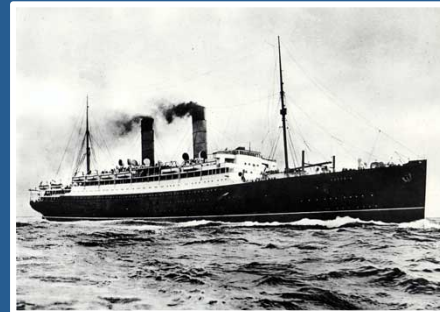
Now you try it....



# Technology

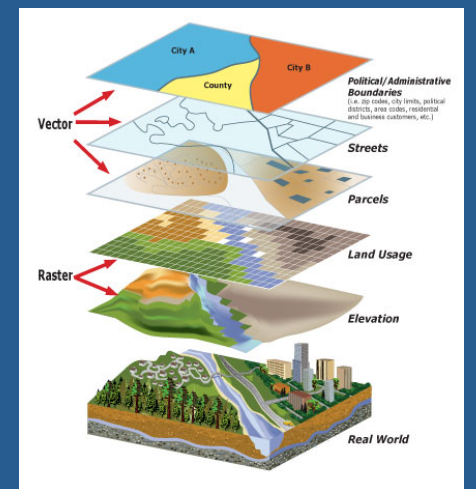
- Human Modifications

*Major technological innovation in the areas of transportation and energy have been used to modify the physical environment.*



- Human Interaction

*New information technologies allow human to have access to information worldwide.*

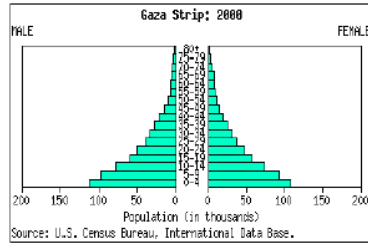
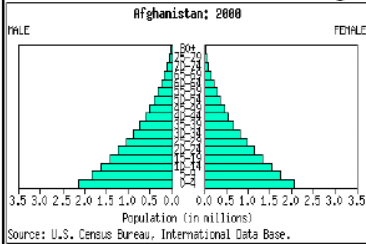




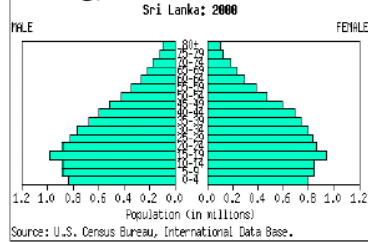
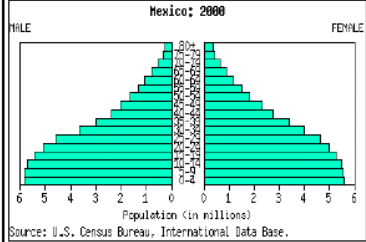
# POPULATION AND DEMOGRAPHICS

# Understanding Population Pyramid

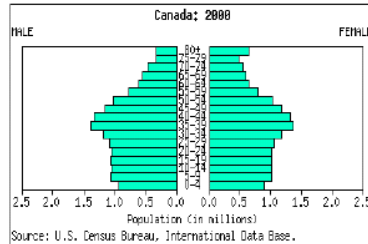
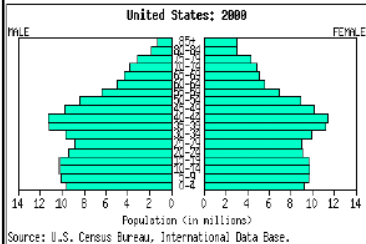
## Rapid Growth



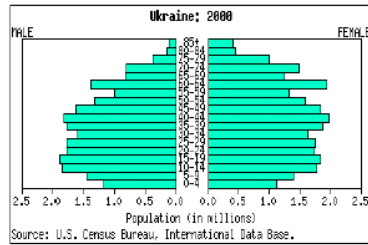
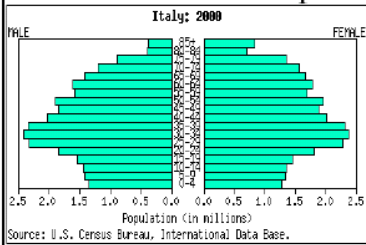
## Moderate (and Slowing) Growth



## Slow Growth

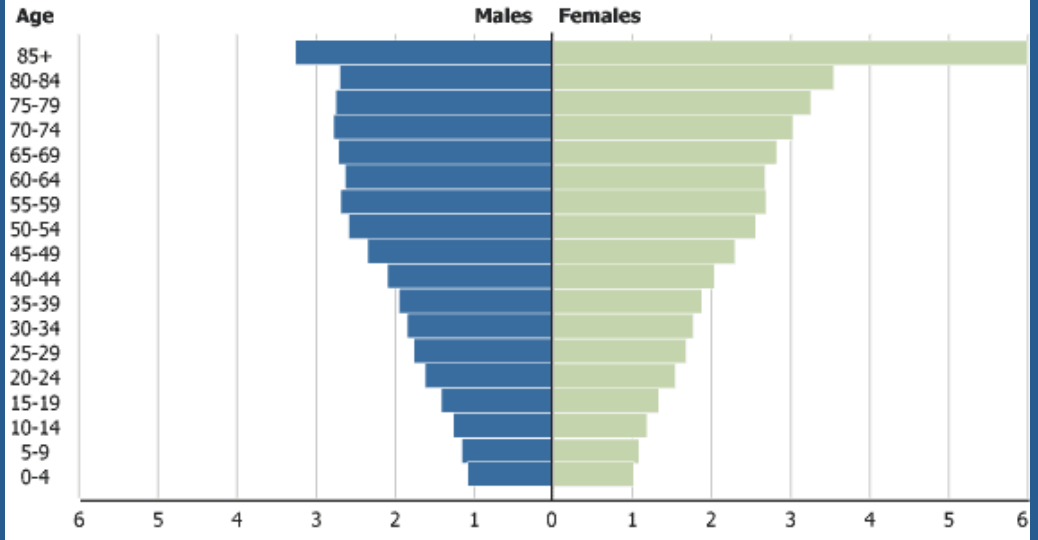


## Population Decline



Source: U.S. Census Bureau International Database ([www.census.gov/ipc/www/idbnew.html](http://www.census.gov/ipc/www/idbnew.html)).

Population in millions



Problem?

# Level of Development

Total Population:

Birth Rate:

Death Rate:

Growth Rate:

Life Expectancy:

Infant Mortality Rate:

Literacy Rate:

Physicians density:

GDP – per capita:

% below Poverty:

The information will determine the country's level of development and standard of living.

**Developing country** – a country that is poor and the people in that country are mostly agricultural workers and they want to become more advanced economically

**Developed country** – a country with an economic depending on manufacturing and technology rather than agriculture

On a piece of paper...

**Your Country is...**

Developed or developing?

Explain why...



CULTURE

# CULTURE

- **Definition**: Shared patterns of learned behavior that are passed on from generation to generation.
- **Components**:
  - Languages, **Ethnicity**, Religion
  - Beliefs, Values, Customs
  - Institutions (Economic, Political, Educational)
  - Arts, Music, and Technology

- **Cultural Geography** - the study of the Earth's *human landscape*
  - the impact of material and nonmaterial human culture on the environment, and the human organization of space
- **Culture Region** - A portion of the Earth's surface that has one or more common cultural elements
- **Cultural Diffusion** - the spreading of a culture element
- **Culture Hearth** - An area where a distinctive set of cultural traits develops

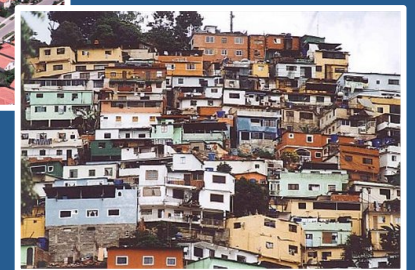
# Culture Landscape

- the landscape created by people and their associated culture
- buildings, shrines, signage, sports and recreational facilities, economic and agricultural structures, transportation systems, etc.
- The skyline of New York City is much taller today than it used to be, thanks to technological innovations that include electricity, elevators, construction materials, and machinery.



# Distinctive Cultural Patterns

- Regions influence cultural patterns
  - types of agriculture (ex. *terrace vs. large farms*)
  - irrigation systems (ex. *pivot vs. drip*)
  - types of government (ex. *democracy vs. theocracy*)
  - urbanization (ex. *urban sprawl vs. shantytowns*)
  - cultural do's and taboos (ex. *treatment of elders, role of women, dress, etc.*)



# Distinctive Culture of Texas

How is the cultural patterns in Texas different from the rest of the United States?



# Cultural Perception

- How groups of people perceive the characteristics of their own and other cultures, places, and regions differently
  - People may view their own culture or place from their own cultural lens, while that culture may or may not be viewed differently by people of another culture.
  - Perceptions of culture can be ethnocentric (placing one's culture and beliefs as a dominant culture) or ethnorelative (placing one's culture and belief as equal to others' cultures and beliefs)
  - Perceptions of cultures can have stereotypes and cultural bias.

# USA vs. Canada Example...

The USA views its nation as a “Melting Pot” in which all cultures adapt and diffuse itself into a predominately “American Culture”.



Canada, however, sees itself as a tossed salad” in which the cultures are together but keep their own, distinctive characteristics.



# Major World Religions



- Animism
- Buddhism



- Christianity



- Hinduism
- Islam



- Judaism
- Sikhism





# Animism



- A religious belief that everything on Earth is imbued with a powerful spirit, capable of helping or harming human needs
- all objects—animals, trees, rocks, rivers, plants, people—share the breath of life and must live in harmony and be treated with equal respect
- communication with each spiritual being is vital
- Ex. When a person wants a tree for carving a mask or a drum, he does not simply chop it down. He explains to the spirit of the tree how its trunk will be used and asks permission for the sacrifice.
- Animists also believe that it is sinful to waste any element of a spirit that has sacrificed itself. Native Americans, for example, used every part of the buffalo they killed—for food, fuel, clothing, and shelter.
- Locations: parts of Africa, the Americas, Asia, and Australia



# Buddhism



- beliefs about the nature of the world and how to act in it.  
Five Precepts (rules):
  - Don't harm living things.
  - Don't take what is not given to you.
  - Don't misuse the senses.
  - Don't lie to yourself or others.
  - Don't drink alcohol or take drugs
- founder, Siddhartha Gautama, who lived between the 6th and the 4th centuries BC
- the Four Noble Truths
  - 1<sup>st</sup>: Life involves suffering and sorrow.
  - 2<sup>nd</sup>: The reason we suffer is that we want things for ourselves. We don't want things to change and yet they do.
  - 3<sup>rd</sup>: Suffering can end when we reduce selfishness.
  - 4<sup>th</sup>: The cure for suffering is the Eightfold Path (wheel)



# Buddhism



- The Eightfold Path
  - Right view (*Understand the Buddha's teachings*)
  - Right thought (*Think about others, not yourself*)
  - Right speech (*Tell the truth, say helpful things*)
  - Right action (*Do things that are kind & thoughtful*)
  - Right work (*Do jobs that help others and do no harm*)
  - Right effort (*Try to follow the right path*)
  - Right mindfulness (*Be aware of your thoughts and actions*)
  - Right concentration (*Focus your thoughts*)
- Locations: South, East, and Southeast Asia



# Christianity



- three main denominations: Roman Catholic, Eastern Orthodox, and Protestant
- based on the teachings of Jesus Christ (Bible)
- Jesus is called the Christ, meaning the one chosen by God.
- Trinity: God = the Father, the Son (Jesus), and the Holy Spirit
- Jesus was sent to save people from sins.
- Locations: Europe, North America, and South America



# Hinduism



- belief in the transmigration of souls, or reincarnation
- all living things are part of the same essence
- Everyone goes through cycles of birth and death. A soul may return many times in human, animal, or even vegetable form. What a person does in the present life will affect the next life – karma.
- The goal of the individual is to escape this cycle, so that the soul may eventually become part of the absolute (perfect) soul.



# Hinduism



- 3 main gods; Brahman (creator; a divine being who has no shape), Vishnu (preserver), and Shiva (destroyer)...and thousands of gods and goddesses
- The Caste System – several classes. It determined people's jobs, where they live, and whom they married. No longer in practice, but it could affect people's opportunities in life.
- All marriages are arranged...coming from same area, same caste level, speak same language, horoscopes being match, etc.
- Locations: South Asia (India)



# Islam



- a monotheistic (meaning one God) like Judaism and Christianity
- based on the teachings of the Prophet Muhammad
- teachings include politics, art, science, family life, financial matters, and social issues
- 2 main groups of Muslims: the Sunnis and the Shi'ites



# Islam



- **The Five Pillars of Islam**
  - Faith (*Recite “There is no God but Allah, and Muhammad is the Messenger of Allah.”*)
  - **Prayer** (*Pray 5 times a day*)
  - Almsgiving (*give a portion of money to care for the poor*)
  - **Fasting** (*fast for a month from dawn to dusk*)
  - Pilgrimage (*Everyone goes on pilgrimage to Mecca*)
- **based on the teachings of the Prophet Muhammad (Koran)**
- **Locations: North Africa, Middle East, Southwest Asia, Indonesia**



# Judaism



- a monotheistic (meaning one God) like Christianity and Islam
- **Founders: Abraham, Moses**
- The Ten Commandments
- **Celebrates Hanukkah**
- Locations: Europe, Israel, and North America



# Sikhism



- believes in one God
- Founder: Guru Nanak
- serve God by caring for each other, by living an honest life, and by working hard... then will be freed from reincarnation
- The Sword Story



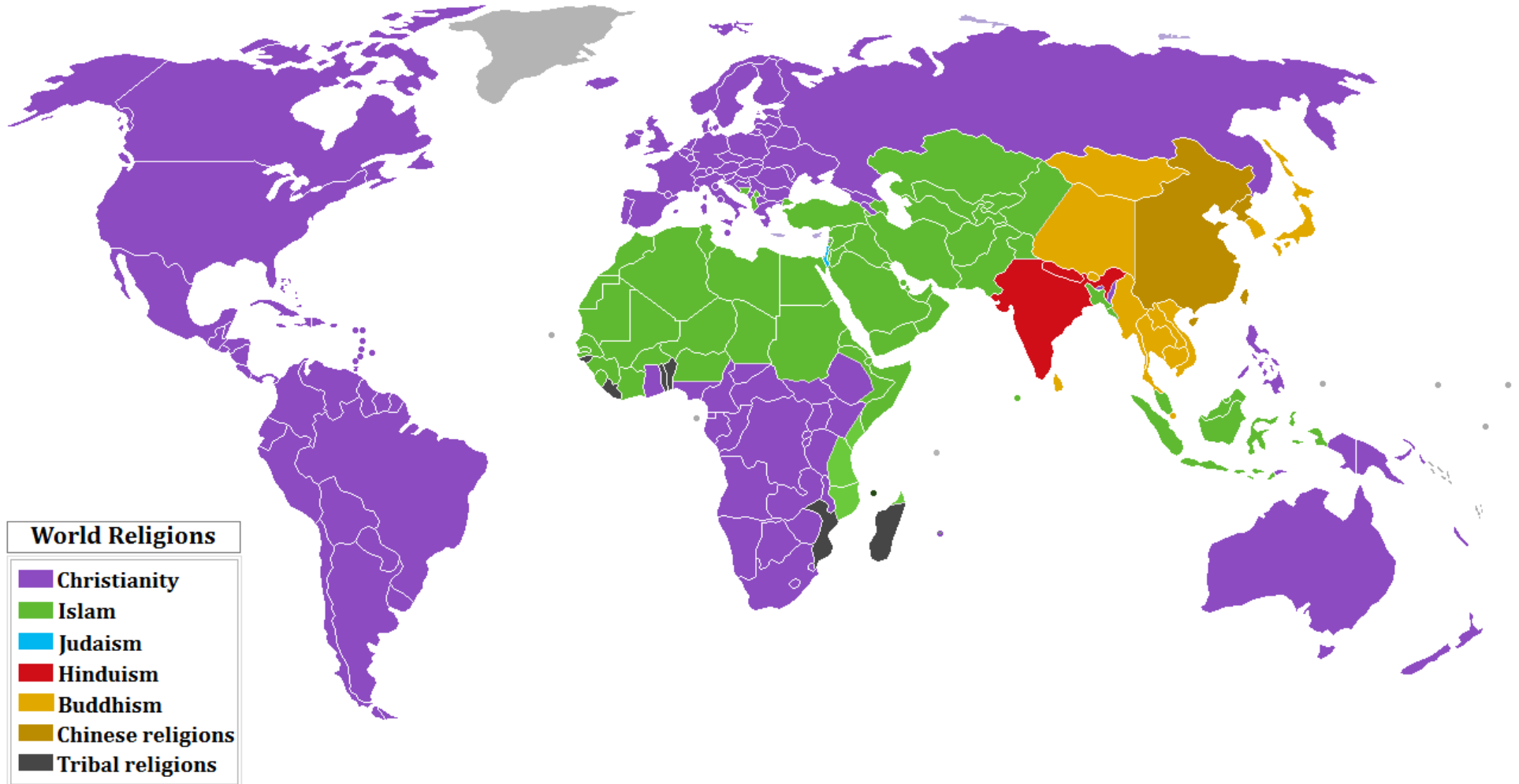
# Sikhism



- The Five Ks
  - Kesh (hair) – Hair must not be cut
  - Kanga (comb) – a comb must be carried in the hair to keep it neat
  - Kirpan (sword) – a small sword is carried to as a symbol of Sikh's willingness to defend themselves. Not used as a weapon.
  - Kara (bracelet) – Sikhs wear a steel bracelet. The circular shape represents the never-ending cycle of life and the steel represents strength.
  - Kachha (short pants) – these pants were once a part of the Sikh military inform. They symbolize cleanliness.
- Location: South Asia



# Where They Are...



[History of Religion](#)

Get to Know Your Country's  
Culture...