

Lesson 5-2B - Slope-Intercept Form

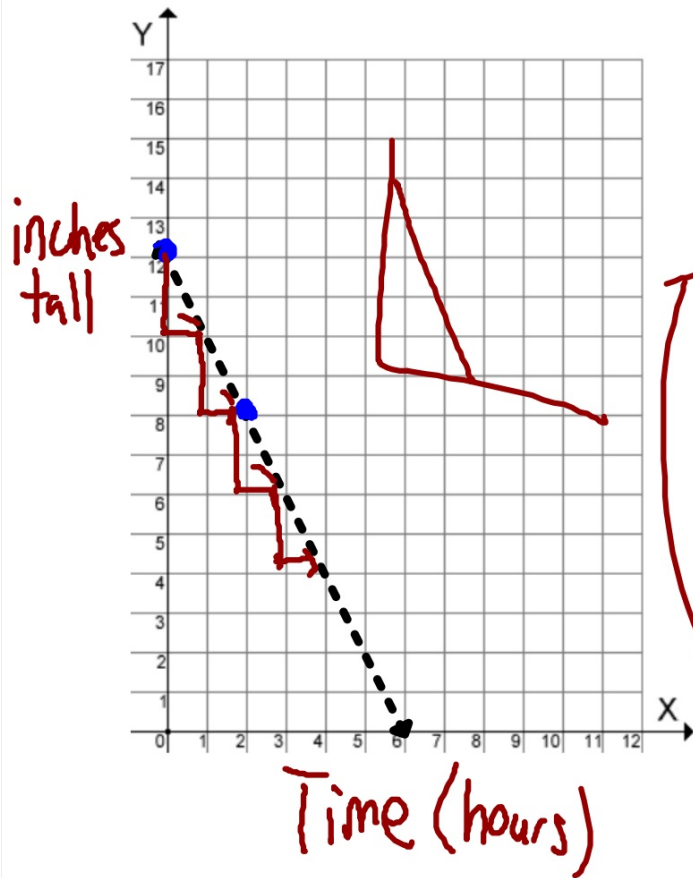
Algebra - January 6, 2012

You light a candle that is 12 inches tall.

After 2 hours, it is 8 inches tall.

Predict how long it will take for the candle to completely melt.





You light a candle that is 12 inches tall.
 After 2 hours, it is 8 inches tall.
 Predict how long it will take for the candle to completely melt.

$$(0, 12) \quad (2, 8)$$

$$\frac{8 - 12}{2 - 0} = \frac{-4}{2} = -2$$

Using slopes to design a picture



Assignment: You will create a picture or design on graph paper using at least 10 straight line segments (you can use more if you'd like). You must use the 10 slopes listed below at least once.


Requirements:

- 1) handed in at the end of the period
- 2) design formed with correct slopes
- 3) uses straight edges
- 4) each line is labeled with its slope

rise (up/down)
run (left/right)


Slopes to be used:


$m_1=0$  $m_2=\text{undefined}$ 


$m_3=1/3$ 


$m_4=3$ 


$m_5=4$ 

$m_6=-1/2$ 

$m_7=-7/2$ 

$m_8=3/4$ 

$m_9=-8/3$ 

$m_{10}=-2/5$ 

THE RUNNER

