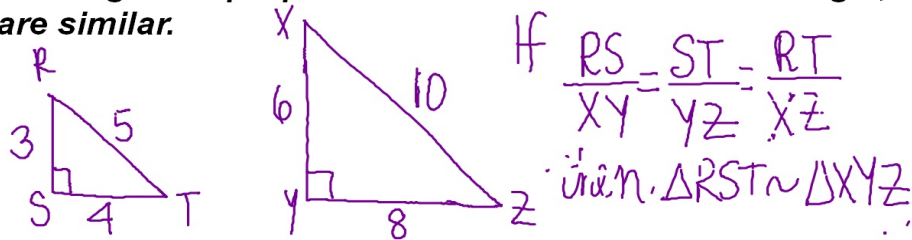
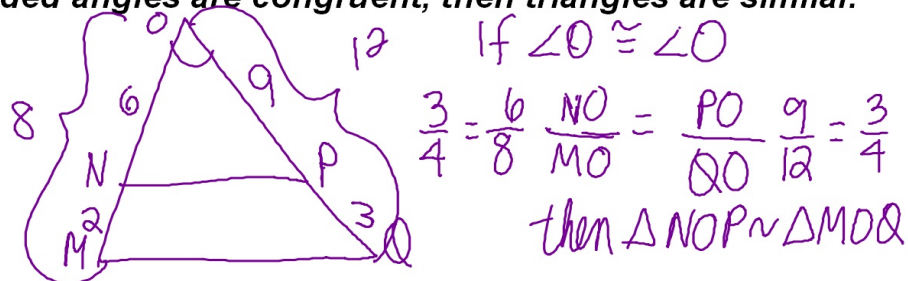


SSS ~ (side-side-side similarity theorem)

If 3 sides of one triangle are proportional to 3 sides of a 2nd triangle, then triangles are similar.



If 2 sides of one triangle are proportional to 2 sides of a 2nd triangle and the included angles are congruent, then triangles are similar.



SAS ~ (side-angle-side similarity theorem)