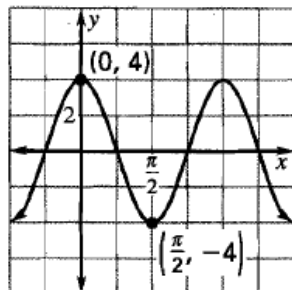
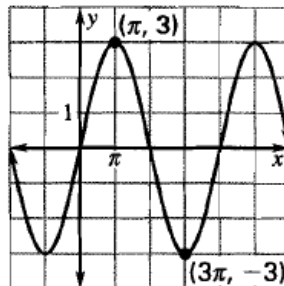


Write the specified function(s) for each graph. Watch graph scale!

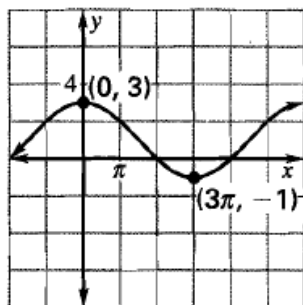
1. cosine function



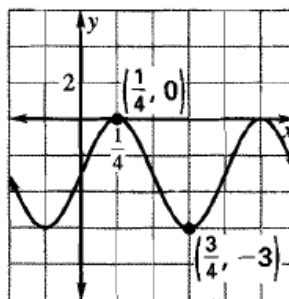
2. sine function



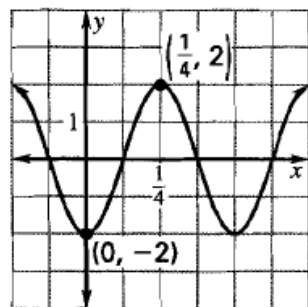
3. cosine function



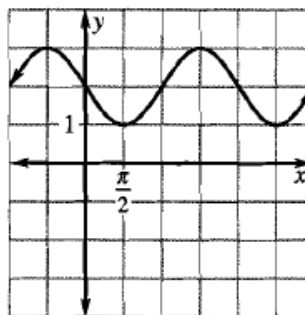
4. sine function



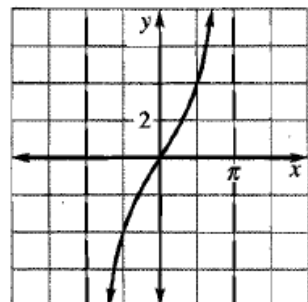
5. sine and cosine functions



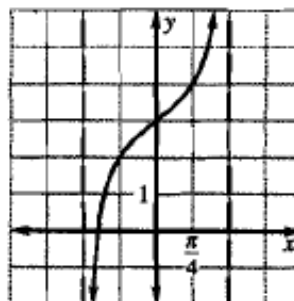
6. sine and cosine functions



7. tangent function



8. tangent function



Write an equation for the graph described.

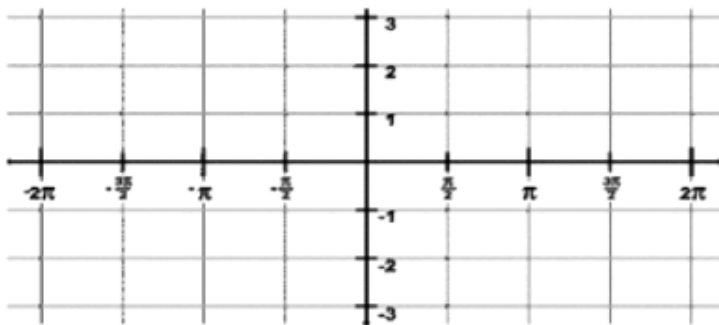
8. The graph of $y = 3 \tan 2x$ is translated left π units, up 8 units, and then reflected in the line $y = 8$.

9. The graph of $y = \frac{1}{2} \cos 6x$ is translated right $\frac{\pi}{6}$ units and down 5 units.

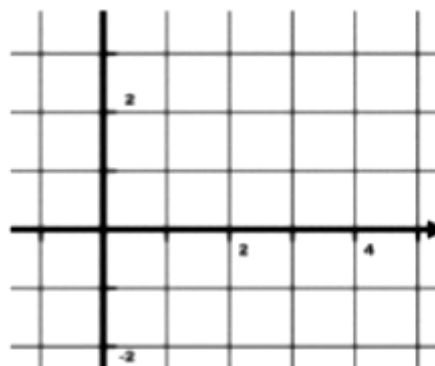
10. The graph of a sine function has range $-3 \leq y \leq 5$ and period 6π .

Graph 1 period of each function.

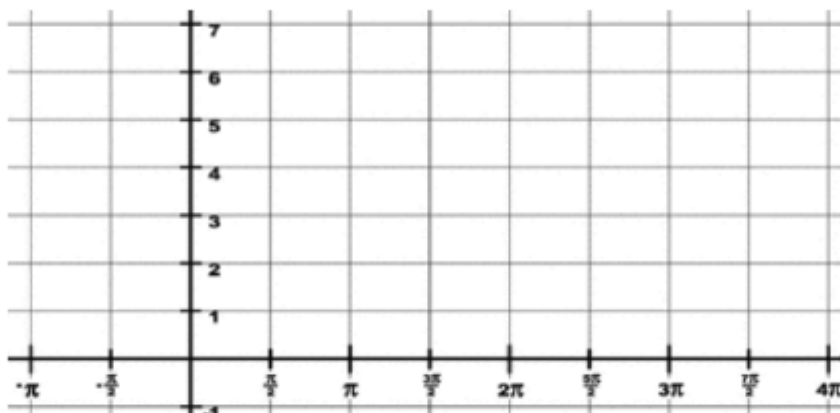
12. $y = -2 \tan \frac{1}{4} x$



13. $y = 2 \cos \pi(x-1)$



14. $y = -3 \sin \frac{1}{2}(x+\pi) + 4$



15. $y = \tan \frac{1}{3} \left(x - \frac{\pi}{2} \right) + 2$

