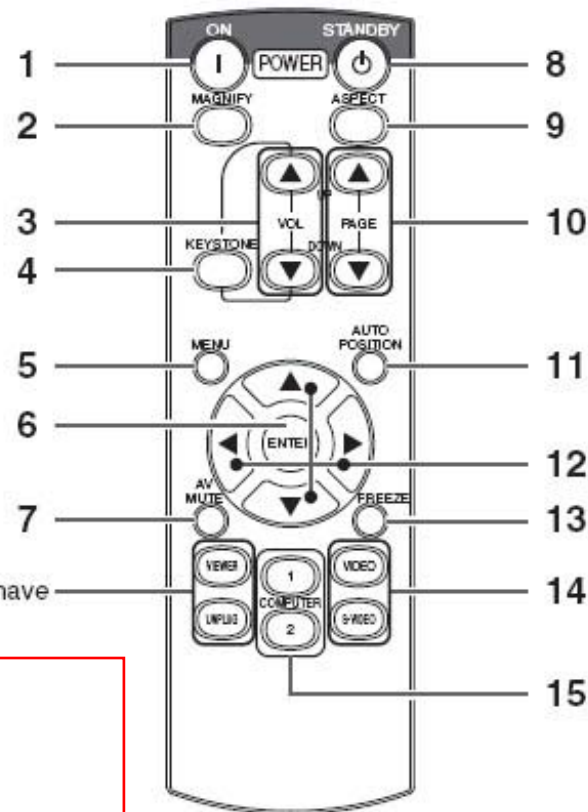


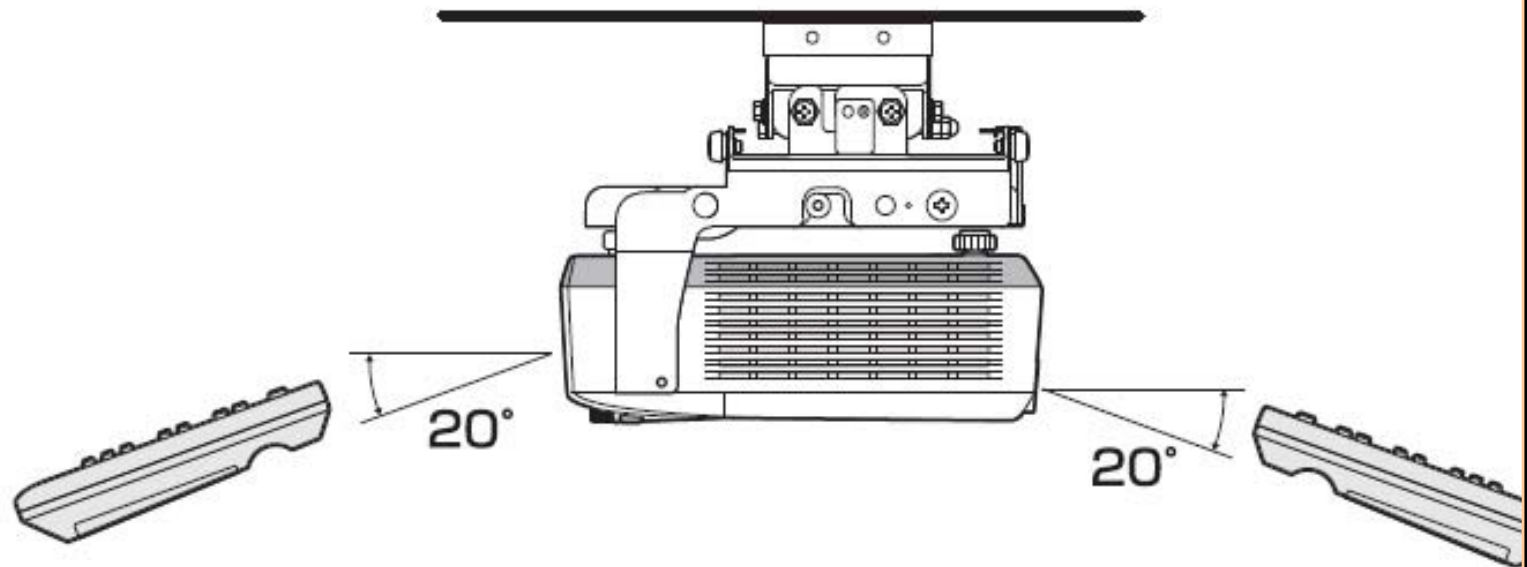
## Remote control



This model does not have this function.

- 1 ON button
  - 2 MAGNIFY button
  - 3 VOLUME UP, DOWN buttons
  - 4 KEYSTONE button
  - 5 MENU button
  - 6 ENTER button
  - 7 AV (Audio/Video) MUTE button
  - 8 OFF button
  - 9 ASPECT button
  - 10 PAGE UP, DOWN buttons
  - 11 AUTO POSITION button
  - 12 Direction buttons
  - 13 FREEZE button
  - 14 VIDEO, S-VIDEO buttons
  - 15 COMPUTER (1, 2) buttons
- The UP and DOWN buttons are used in the KEYSTONE adjustment in addition to the volume

## Reception angle (vertical), ceiling mount

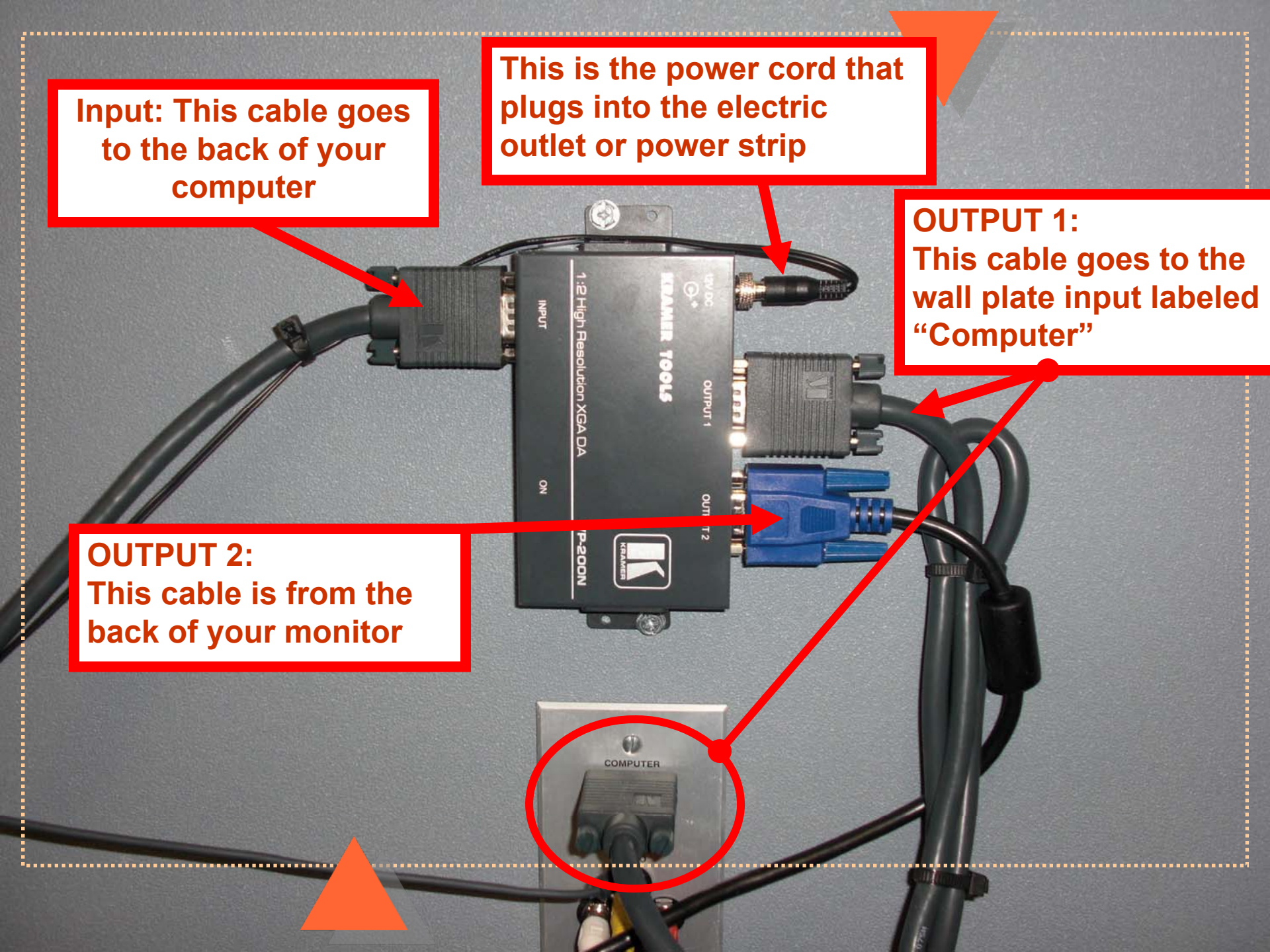


**Input:** This cable goes to the back of your computer


This is the power cord that plugs into the electric outlet or power strip

**OUTPUT 1:**  
This cable goes to the wall plate input labeled "Computer"

**OUTPUT 2:**  
This cable is from the back of your monitor







12 foot audio cable that will plug into the green audio plug on the back of the computer

Composite Cables which are used to plug in a VCR or DVD player to projector.

Color coded plugs – match the colors (**RED YELLOW WHITE**)

On your VCR/DVD plug into the output color plugs