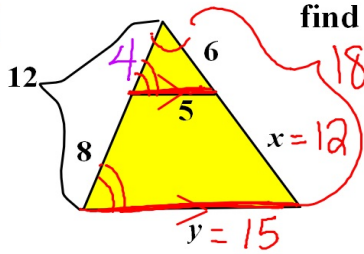


7-6 Proportional Lengths

Jan. 10, 2012

std. 5.0

ex. 1



find x and y

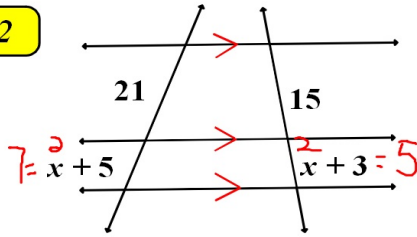
$$\frac{6}{x} = \frac{4}{8}$$

$$\frac{6}{x} = \frac{1}{2}$$

$$\frac{4}{12} = \frac{5}{y}$$

$$\frac{1}{3} = \frac{5}{y}$$

ex. 2



find x

$$\frac{15}{21} = \frac{x+3}{x+5}$$

$$\frac{21}{x+5} = \frac{15}{x+3}$$

$$\frac{5}{7} = \frac{x+3}{x+5}$$

7-6 Proportional Lengths
(continued)

std. 5.0

ex. 1 find x

