

On what structures are genes located?

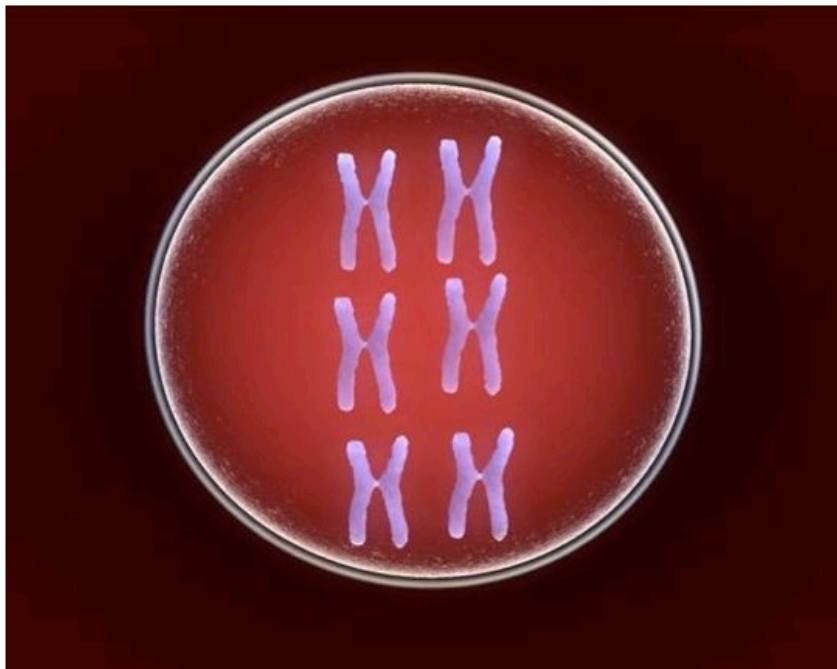
- A. cell walls
- B. chromosomes
- C. mucous membrane
- D. carbohydrate



Question 2 of 5

In what cell organelle are chromosomes located?

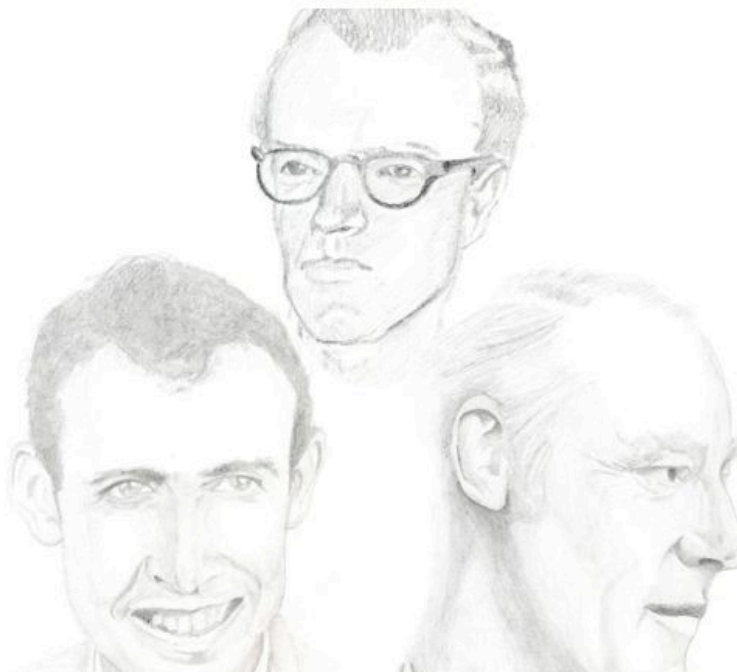
- A. mitochondria
- B. cell membranes
- C. Golgi apparatus
- D. nucleus



Question 3 of 5

For what accomplishment did Watson, Crick, and Wilkins win the Nobel prize?

- A. creation of inorganic compounds
- B. synthesis of DNA
- C. development of a DNA model
- D. develop cure for polio



Question 4 of 5

Which of the following is not a nitrogenous base found in DNA?

- A. guanine
- B. neon
- C. thymine
- D. cytosine



Question 5 of 5

A strand of DNA consists of many alternating:

- A. chromosomes
- B. nitrogenous base sequences
- C. alternating chains of lipids
- D. chemosynthetic bacteria

