

Graphs of Reciprocal Functions

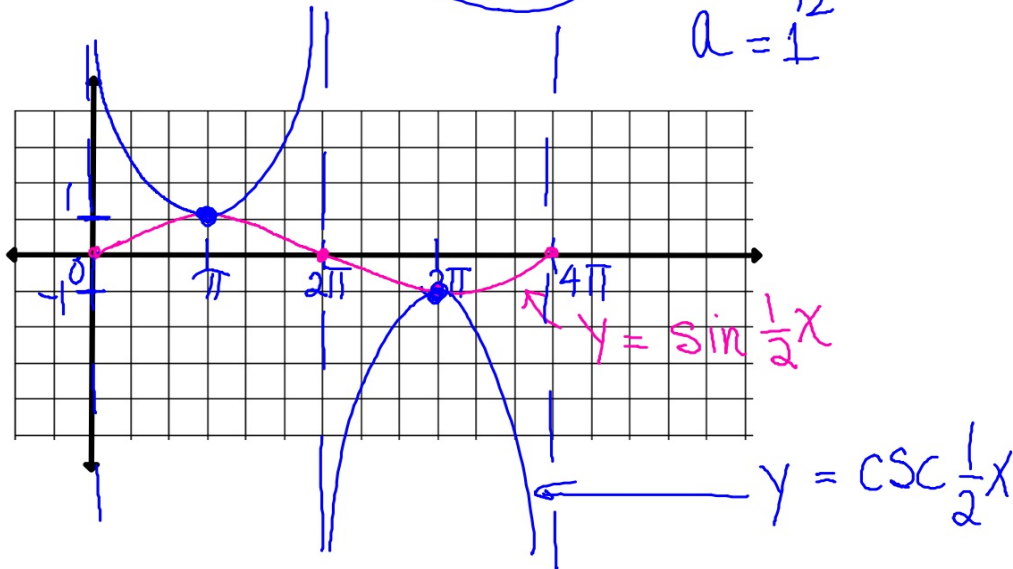
trig. std. 4.0

ex. 1

$$y = \csc \frac{1}{2}x$$

$$Y = \frac{1}{\sin \frac{1}{2}x}$$

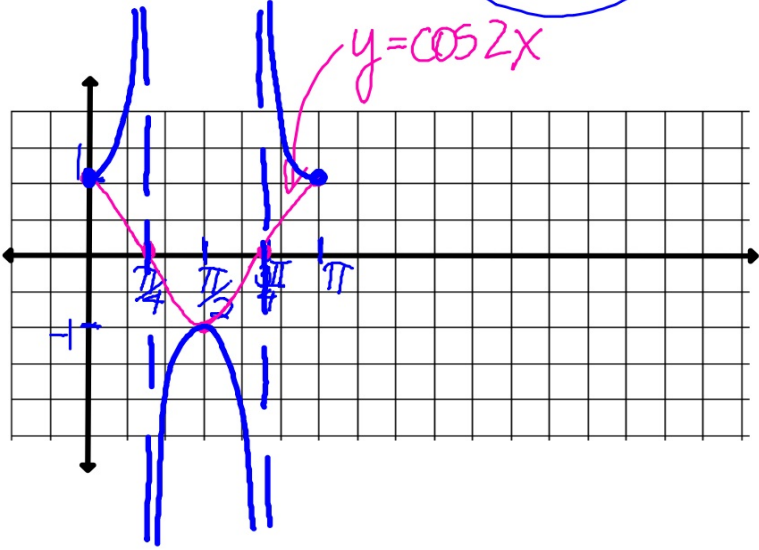
$$\text{per } \frac{2\pi}{\frac{1}{2}} = 4\pi$$
$$a = 1$$



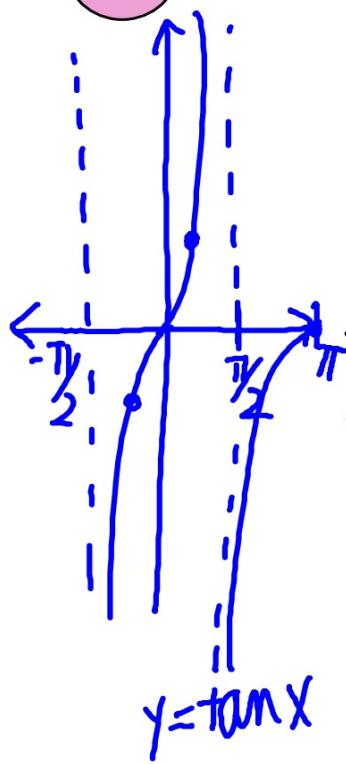
ex. 2

$$y = \sec 2x$$

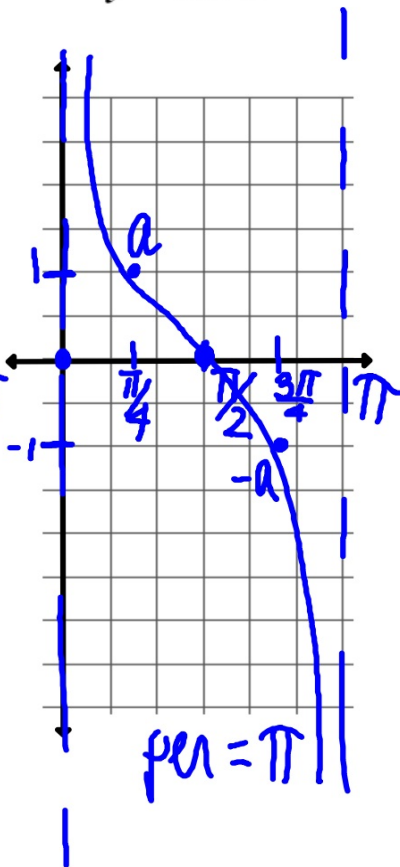
$$y = \frac{1}{\cos 2x} \rightarrow \text{per} = \frac{2\pi}{2} = \pi$$
$$a = 1$$



ex. 3



$$y = \cot x$$



$$y = \cot 2x$$

$$\text{per} = \frac{\pi}{2}$$

