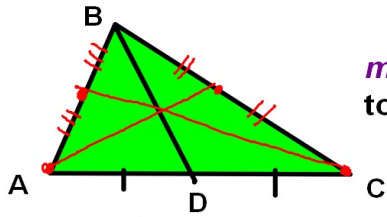
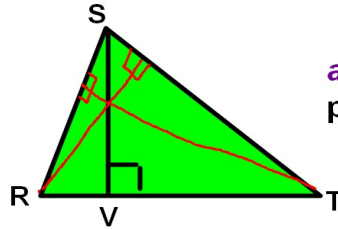


4-7 Medians, Altitudes and Angle Bisectors

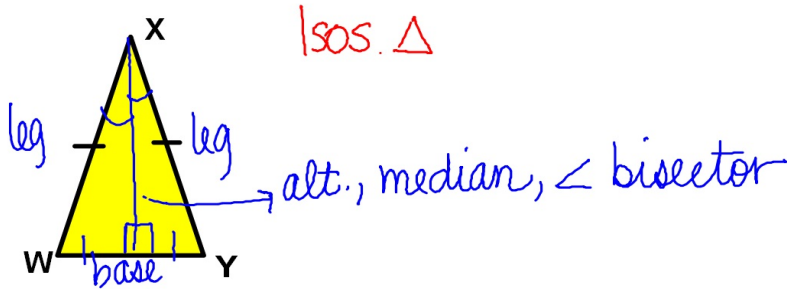
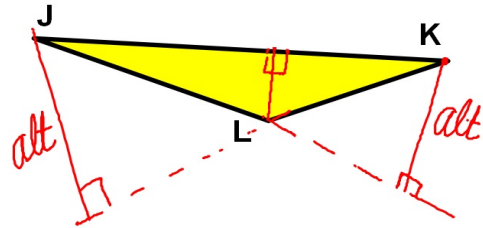
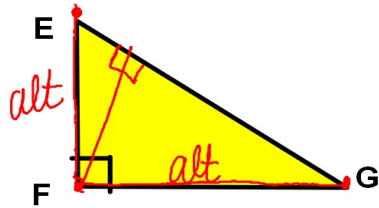
Oct 27



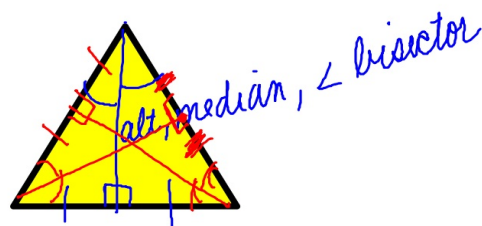
median \overline{BD} is drawn from vertex B to the midpoint of opposite side \overline{AC}



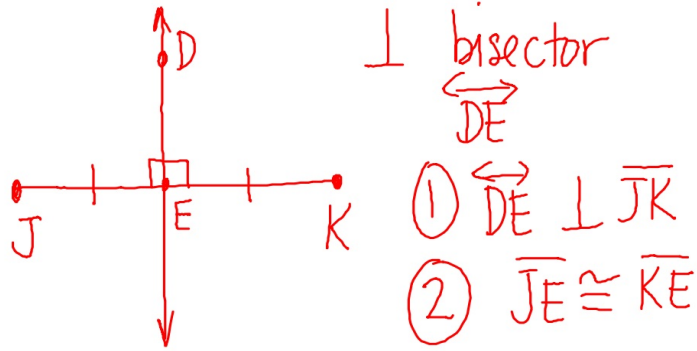
altitude \overline{SV} is drawn from vertex S perpendicular to opposite side \overline{RT}



equilateral triangle



perpendicular bisector of a segment



Theorems 4-5 and 4-6

A point is on the perpendicular bisector of a segment if and only if the point is equidistant from the endpoints of the segment.

Theorems 4-7 and 4-8

A point is on the angle bisector of an angle if and only if the point is equidistant from the sides of the angle.

