

# Warm-up

**1. \_\_\_\_\_ energy sources are *most* likely to be abundant in California due to the position on a plate boundary?**

- a. solar
- b. wind
- c. geothermal
- d. nuclear

**2. \_\_\_\_\_ formed as the result of erosion by glaciers.**

- a. U-shaped valley
- b. the San Andreas Fault
- c. Lassen Peak
- d. V-shaped valleys

**3. The main purpose of the California aqueduct is to\_\_\_\_\_.**

- a. provide abundant ocean water to drier regions of California.
- b. allow inexpensive water routes for transporting commercial products.
- c. transport fresh water to areas with dense populations.
- d. divert floodwater from populated regions to sparsely populated areas.

# “CA’s Natural Hazards!”



La Conchita, CA

13A.3

# Natural Hazard

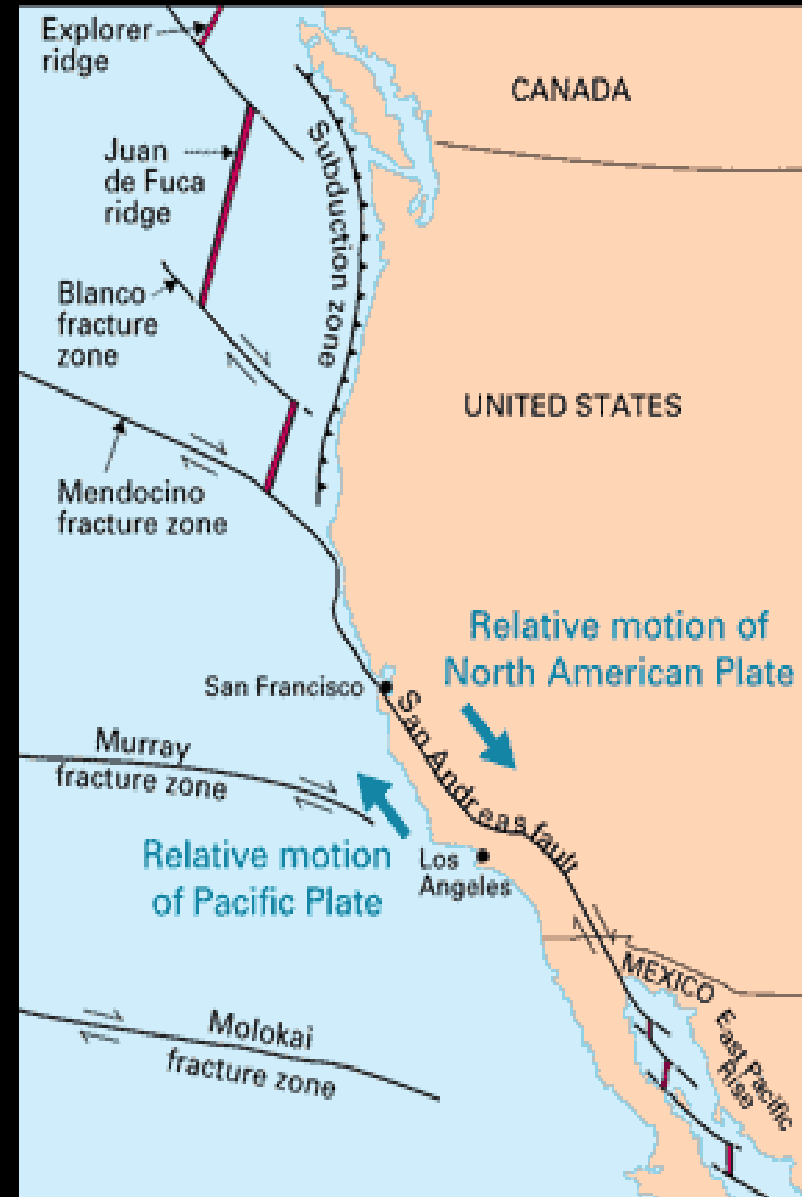
An aerial photograph of a volcanic eruption. A large, dark mountain peak is visible on the left, with a massive plume of white ash and dark smoke rising from its summit. The plume spreads across the sky, partially obscuring the background. The foreground shows a rocky, ash-covered slope with some snow patches.

## Dangerous Earth processes

- Earthquakes
- Volcanoes
- Storms

# Recall: **San Andreas Fault**

- Pacific Plate *against* North American Plate
- **Causes Earthquakes in CA!**
- Where will it take us?
- CA → Island!



# CA Earthquake

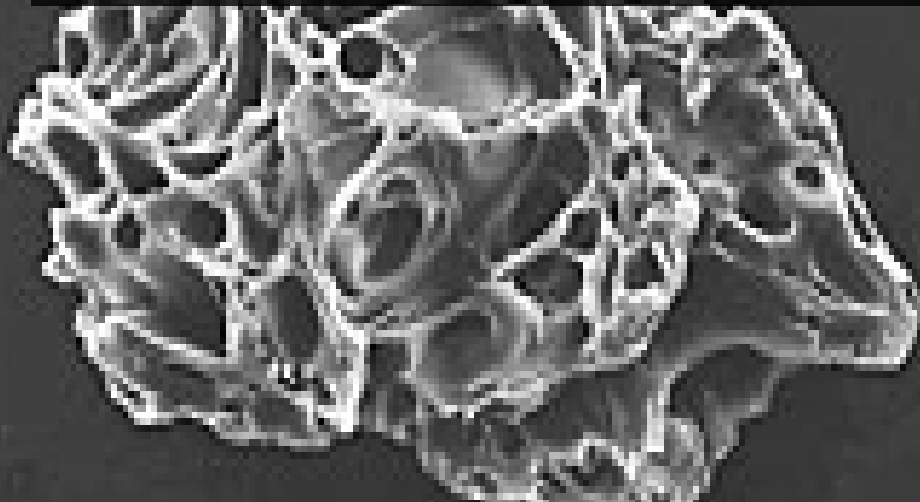
- Seismic Shaking
- Tsunamis
- Liquefaction
- Landslides



# CA Volcanoes

- Volcanic **Ash**
- **Lava** Flow
- Volcanic **Gases**

–CO<sub>2</sub>



# CA Storms



- **Mudflows**
- **Flooding**
  - Regional
  - Flash flood