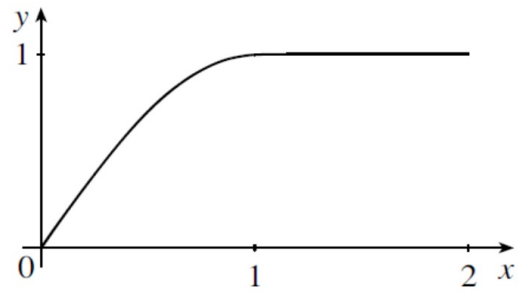


**Drill Question:** The following is a graph of  $f(x)$ .



Given that  $\int_0^1 f(x) dx = 0.64$ , what is  $\int_0^2 3f(x) dx$ ?



Page 1

**2.** Consider this function  $f$ :

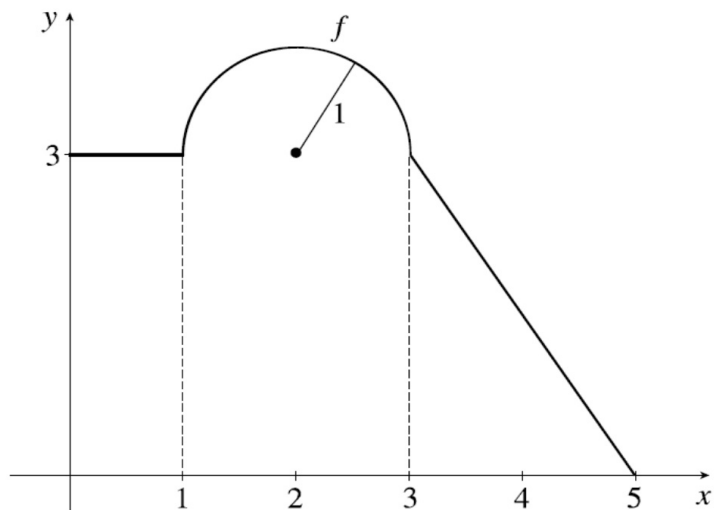
Compute the following:

(a)  $\int_0^2 f(x) dx$

(b)  $\int_1^3 f(x) dx$

(c)  $\int_0^4 f(x) dx$

(d)  $\int_0^5 f(x) dx$



Page 2