

Geometry Second Semester Review
Chapter 8

Name _____

SHOW WORK.

1a. Is a triangle with sides 2, 3, and 4 a right triangle? Yes or No, and explain your answer.

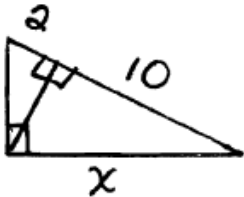
1b. Two sides of a triangle measure 21 and 38. Between what 2 numbers must the third side lie?

#2- 11: Give exact answers in simplest form—no decimals.

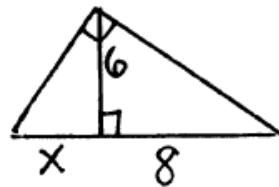
2. Find the geometric mean between 32 and 3.

3. A rectangle has diagonal 10 and height 4. Find the length of the base.

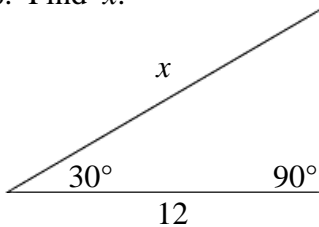
4. Find x .



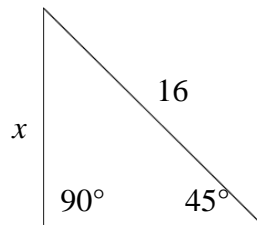
5. Find x .



6. Find x .



7. Find x .



8. Find x .



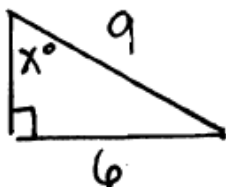
9. The area of a square is 36 cm^2 . Find the length of the diagonal.

10. The perimeter of an equilateral triangle is 60 in. Find the length of the altitude.

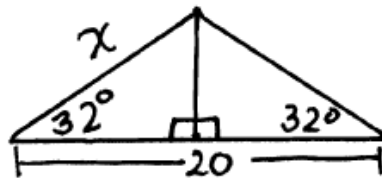
11
In $\triangle RST$, $\tan R = \frac{7}{24}$. Find $\sin R$ and $\cos R$.

#12-14: Use SOH-CAH-TOA and round answers to the nearest tenth.

12. Find x .



13. Find x .



14. From a point 3 km away from a rocket launch site, the angle of elevation to the base of the vertically ascending rocket is 38° . How high is the rocket at that moment?