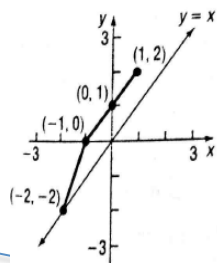
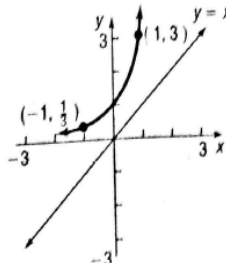


Graph the inverse of the following 1 to 1 function:

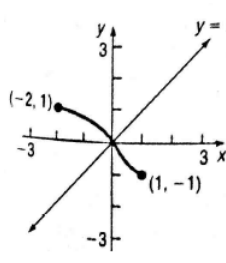
18.)



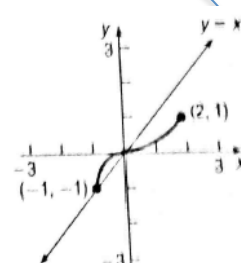
19.)



20.)



21.)



Given that the following functions are 1to1, then find the inverse function:

12.) $f(x) = \frac{2}{3+x}$

15.) $f(x) = \frac{2x-3}{x+4}$

13.) $f(x) = \frac{2x}{x-1}$

16.) $f(x) = 2\sqrt[3]{x}$

14.) $f(x) = \frac{3x+4}{2x-3}$

17.) $f(x) = \frac{4}{\sqrt{x}}$

Complete the Blue or Purple Question around The room

Given that the following functions are 1to1, then find the inverse function:

6.) $f(x) = 3x$

7.) $f(x) = 4x+2$

8.) $f(x) = x^3-1$

9.) $f(x) = \frac{4}{x}$

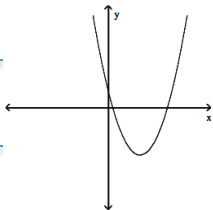
10.) $f(x) = \frac{1}{x} - 2$

11.) $f(x) = \frac{4}{x+2}$

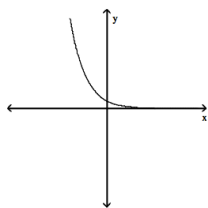
Complete the Yellow Question around The room

Start Here: Identify the different types of Relations are listed here and explain why:

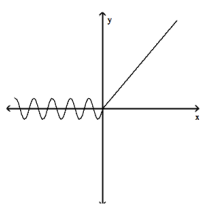
1.)



2.)



3.)



4.)

$\{(1,3), (2, 3), (5,6), (4,8)\}$

5.)

$\{(0,6), (2,5), (4,4), (6,3)\}$

Yellow Questions:

Please answer both or one of the questions below on a large dry- erase space and leave up for teacher feedback.

- 1.) Graph(by a table or calculator) the following function $y=|x|$ and answer the following.
 - a. Is it one-to -one? How do you know?
 - b. If it is not one to one what could you do to the domain for it to be one to one?

- 2.) Graph(by a table or calculator) the following function $y=x^4$ and answer the following.
 - a. Is it one-to -one? How do you know?
 - b. If it is not one to one what could you do to the domain for it to be one to one?

Blue Question:

Please answer the question below on a large dry- erase space and leave up for teacher feedback.

Can a one-to- one function and it's inverse be equal? What must be true about the graph of $f(x)$ for this to happen? Give some examples

Purple Questions:

Please answer both or one of the questions below on a large dry- erase space and leave up for teacher feedback.

- 1.) A function $f(x)$ has an inverse function. If the graph of $f(x)$ lies in quadrant I, in which quadrant does the graph of $f^{-1}(x)$ lie? Use an example to prove your argument.

- 2.) A function $f(x)$ has an inverse function. If the graph of $f(x)$ lies in quadrant II, in which quadrant does the graph of $f^{-1}(x)$ lie? Use an example to prove your argument.