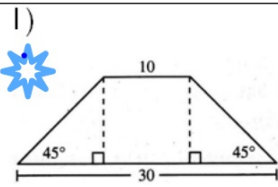


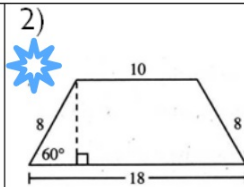
WARMUP

$$\frac{b_1 + b_2}{2} (h)$$

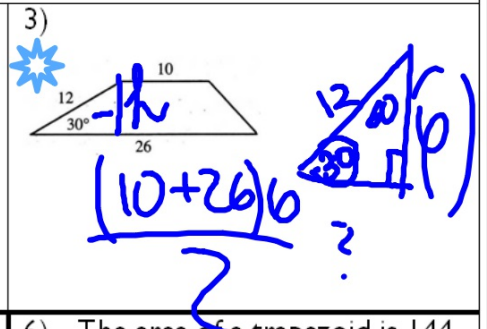
I-3: Find the area of each trapezoid.



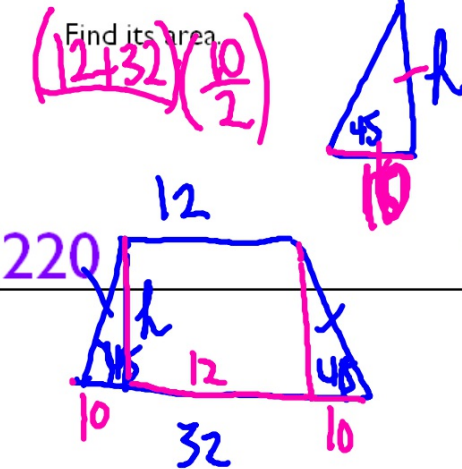
200



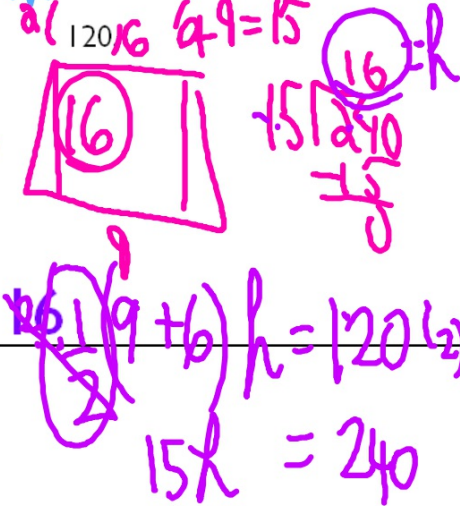
$56\sqrt{3}$



4) An isosceles trapezoid has base angles of 45° and base angles of lengths 12 and 32.



5) Find the height of a trapezoid with bases 9 and 6 and area



6) The area of a trapezoid is 144 km^2 . The shorter base is 15 km and the height is 6 km.

