

Warm-up

Remember: Answer questions so it's clear what you are answering

1. What is the rule on coming to class and being on time?
2. What is the late-work policy in this class?
3. What is the electronics policy at LHS?
4. List 4 things you need to bring with you to class everyday?

Graphing

What is a Graph?

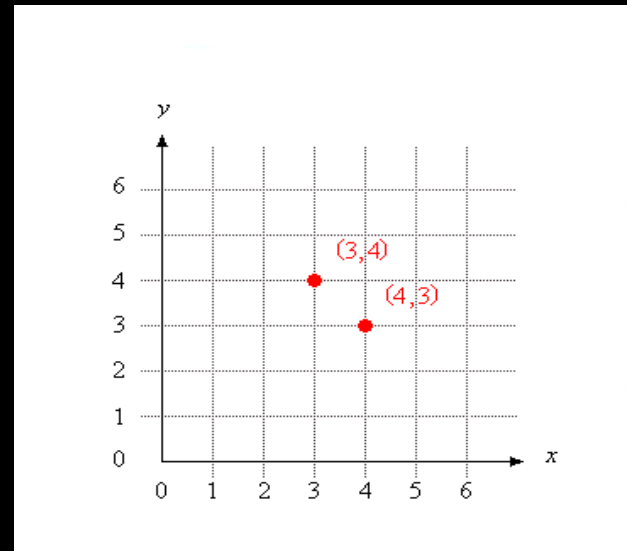
- Way of visually representing the relationship between two or more variables.

WHAT THE !?!?

- Drawing that shows how two different things affect each other.

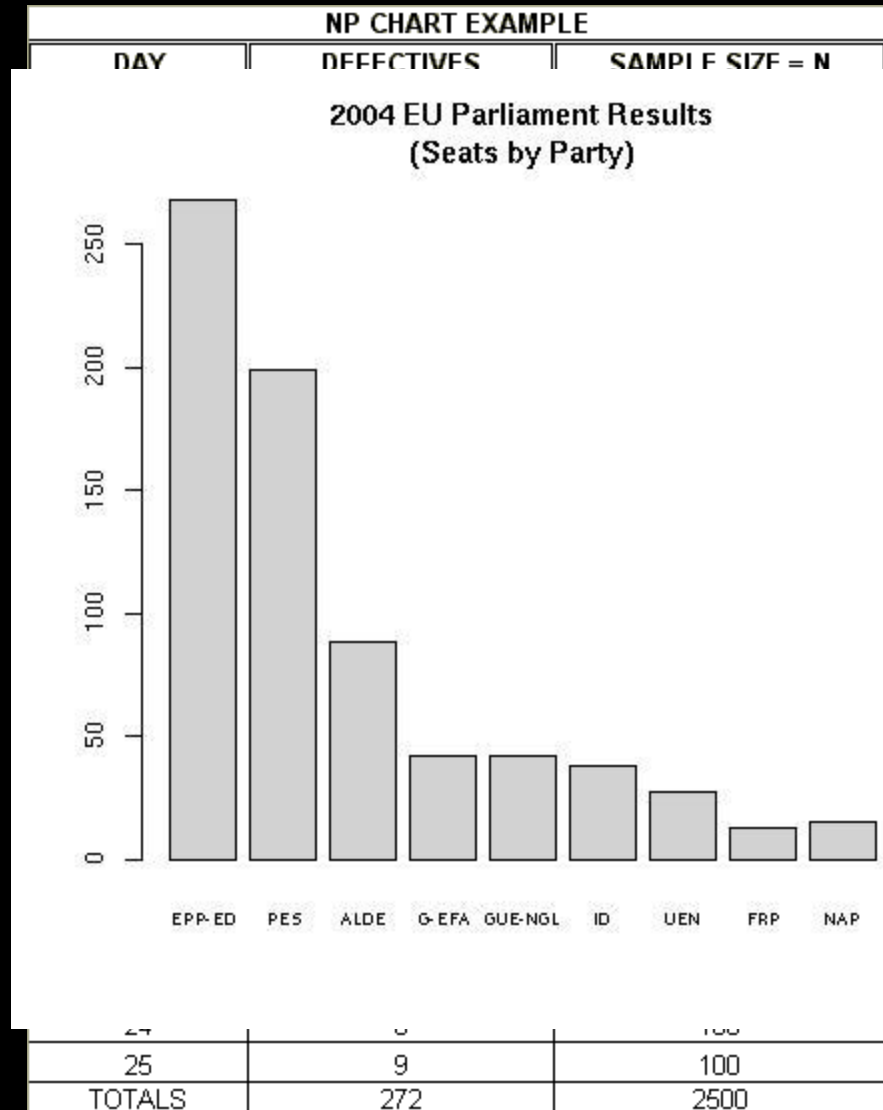
Ordered Pairs

- (X, Y)
- EX: $(-1, 3)$, $(2, 5)$, $(0, 0)$



Graphs & Tables

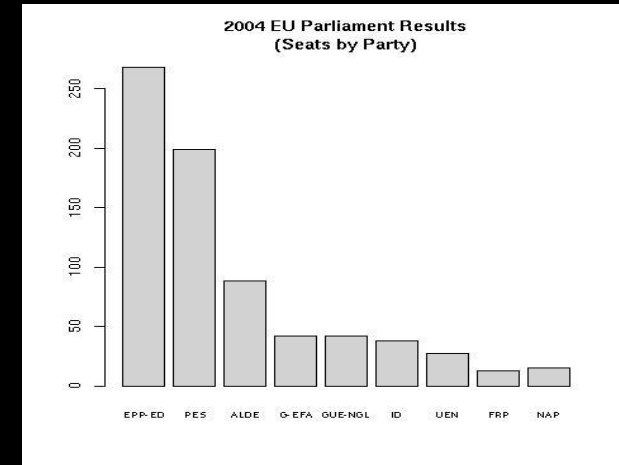
- TABLE:
 - A chart that shows ordered pairs.
- WHY Graphs?
 - Easy to see relationships.



Different Graphs

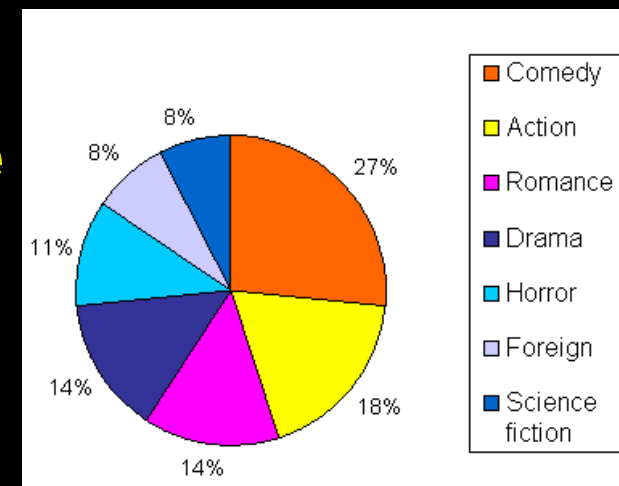
1. Bar Graph

- Comparing **categories**



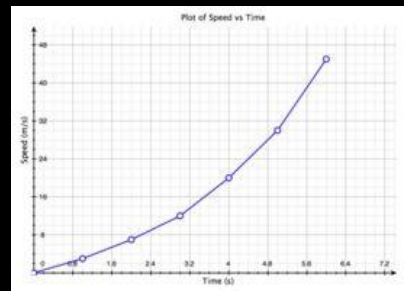
2. Pie Chart

- Comparing **parts of a whole**



3. Line Graph

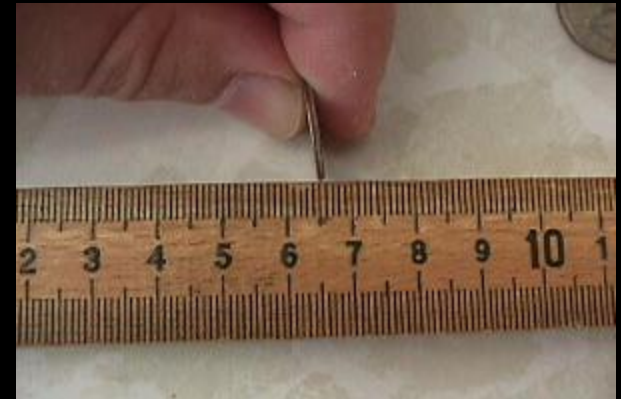
- Comparing 2 things that **change together**
- (most common in science!)



Lab #1 – “Introduction to Graphing Activity”

- Measuring in Metrics:
- Meter, cm, mm

• ~~INCHES~~



LAB #1 Vocabulary Review:

1. **“Average”** = Middle value
2. **“Percent”** = “per” + “cent” = for every 100

$$\text{Average} = \frac{\text{(Sum of values)}}{\text{Total \# of Values}}$$

$$\text{Percent} = \frac{\text{(Value Given)}}{\text{(Max. Value Possible)}} \times 100$$

Get out your lab...

Number of Students in Class

12

5

<160 cm

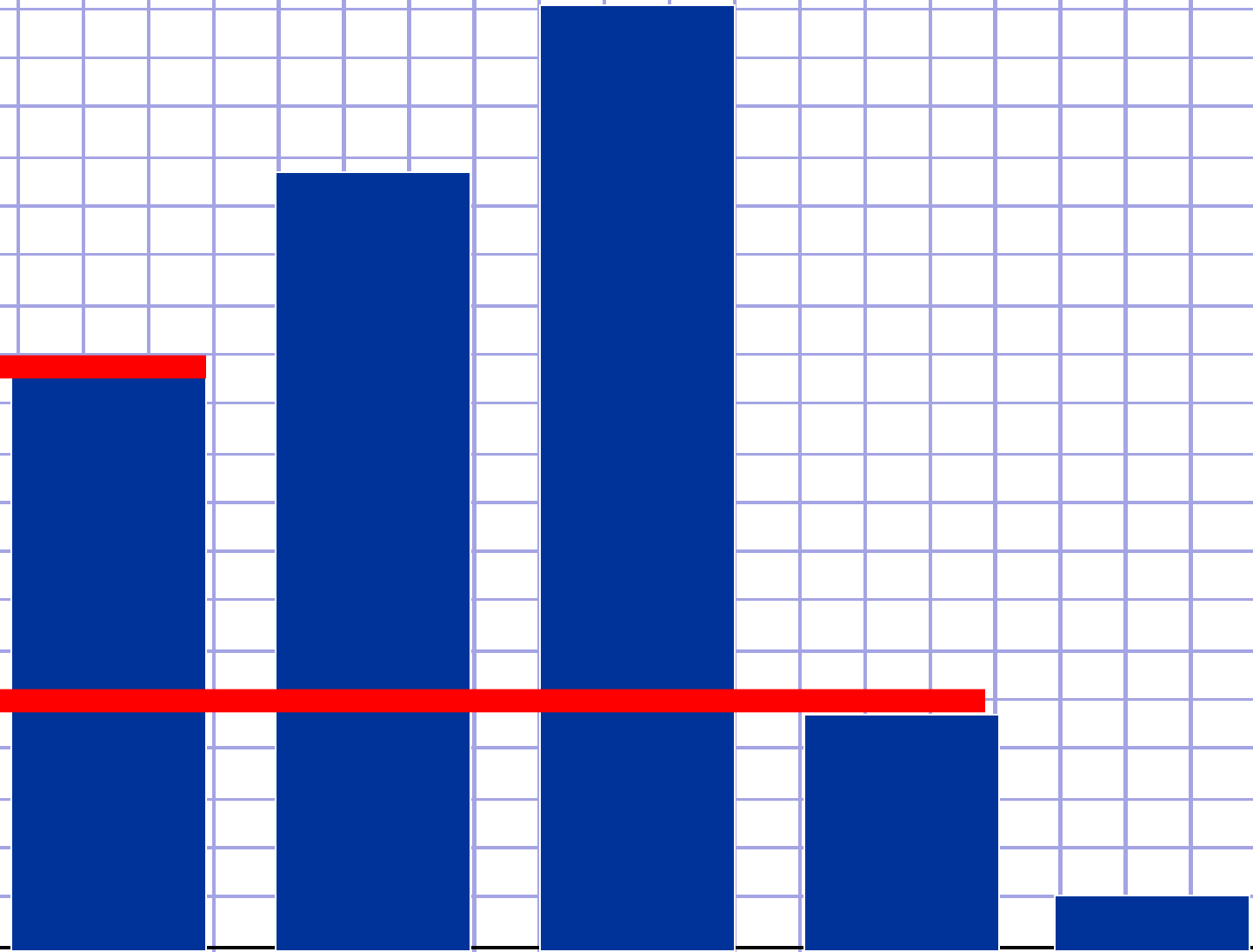
160-169cm

170-179cm

180-189cm

≥190cm

HEIGHT CATEGORIES



Warm-down

1. What is a graph?
 - Drawing that shows how two different things affect each other.
2. Give me an example of ordered pairs:
 - EX: $(-1,3)$, $(2,5)$, $(0,0)$
3. What are 3 kinds of graphs?
 1. Bar graph
 2. Pie chart
 3. Line graph

Warm-down...

1. A Bar Graph compares Categories.
2. A Pie Chart compares Parts of a Whole.
3. A line graph compares 2 or more things that change together.