

Additional Resources

Assessment Book

- Chapter Test, Levels A, B, C, pp. 4–9
- Standardized Chapter Test, pp. 10–11
- SAT/ACT Chapter Test, pp. 12–13
- Alternative Assessment, pp. 14–15

Test Generator CD-ROM

Chapter Test

Easily-readable reduced copies (with answers) of Chapter Test B, the Standardized Chapter Test, and the Alternative Assessment from the Assessment Book can be found on pp. 1G–1H.

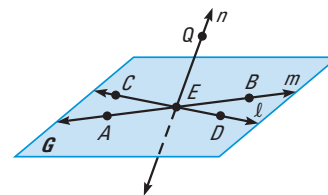
20. Sample:



17. $\angle 1$ and $\angle 2$, $\angle 2$ and $\angle 3$, $\angle 3$ and $\angle 4$, $\angle 4$ and $\angle 1$

Use the diagram to decide whether the statement is *true* or *false*.

1. Point A lies on line m . **true**
2. Point D lies on line n . **false**
3. Points B , C , E , and Q are coplanar. **false**
4. Points C , E , and B are collinear. **false**
5. Another name for plane G is plane QEC . **false**



Find the indicated length.

6. Find HJ . **22**



7. Find BC . **11**



8. Find XZ . **71**

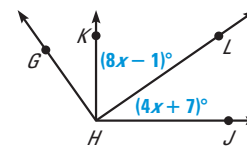


In Exercises 9–11, find the distance between the two points.

9. $T(3, 4)$ and $W(2, 7)$ $\sqrt{10} \approx 3.2$
10. $C(5, 10)$ and $D(6, -1)$ $\sqrt{122} \approx 11.0$
11. $M(-8, 0)$ and $N(-1, 3)$ $\sqrt{58} \approx 7.6$
12. The midpoint of \overline{AB} is $M(9, 7)$. One endpoint is $A(3, 9)$. Find the coordinates of endpoint B . **(15, 5)**
13. Line t bisects \overline{CD} at point M , $CM = 3x$, and $MD = 27$. Find CD . **54**

In Exercises 14 and 15, use the diagram.

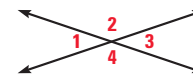
14. Trace the diagram and extend the rays. Use a protractor to measure $\angle GHJ$. Classify it as *acute*, *obtuse*, *right*, or *straight*. **125° ; obtuse**
15. Given $m\angle K H J = 90^\circ$, find $m\angle L H J$. **35°**



16. The measure of $\angle QRT$ is 154° , and \overrightarrow{RS} bisects $\angle QRT$. What are the measures of $\angle QRS$ and $\angle SRT$? **$77^\circ, 77^\circ$**

In Exercises 17 and 18, use the diagram at the right.

17. Name four linear pairs.
18. Name two pairs of vertical angles. **$\angle 1$ and $\angle 3$, $\angle 2$ and $\angle 4$**



19. The measure of an angle is 64° . What is the measure of its complement? What is the measure of its supplement? **$26^\circ, 116^\circ$**
20. A convex polygon has half as many sides as a concave 10-gon. Draw the concave polygon and the convex polygon. Classify the convex polygon by the number of sides it has. **See margin for art; pentagon.**
21. Find the perimeter of the regular pentagon shown at the right. **120**
22. **CARPET** You can afford to spend \$300 to carpet a room that is 5.5 yards long and 4.5 yards wide. The cost to purchase and install the carpet you like is \$1.50 per square foot. Can you afford to buy this carpet? *Explain.* **No; it would cost \$334.13 to carpet the room.**

