

# Warm-up

**1. A mineral is a \_\_\_\_\_.**

- a. Type of rock
- b. Natural, solid with a definite crystalline structure.
- c. Extrusive Igneous
- d. Salt Feature.

**2. A resource is a \_\_\_\_\_ item that can be \_\_\_\_\_ to do something.**

- a. necessary, used
- b. mineral, made
- c. valuable, manufactured

**3. Oil comes from \_\_\_\_\_.**

- a. Dead, marine animals
- b. The store
- c. Dead, land animals
- d. extrusive igneous deposits



# California

13A.1 & 13A.2

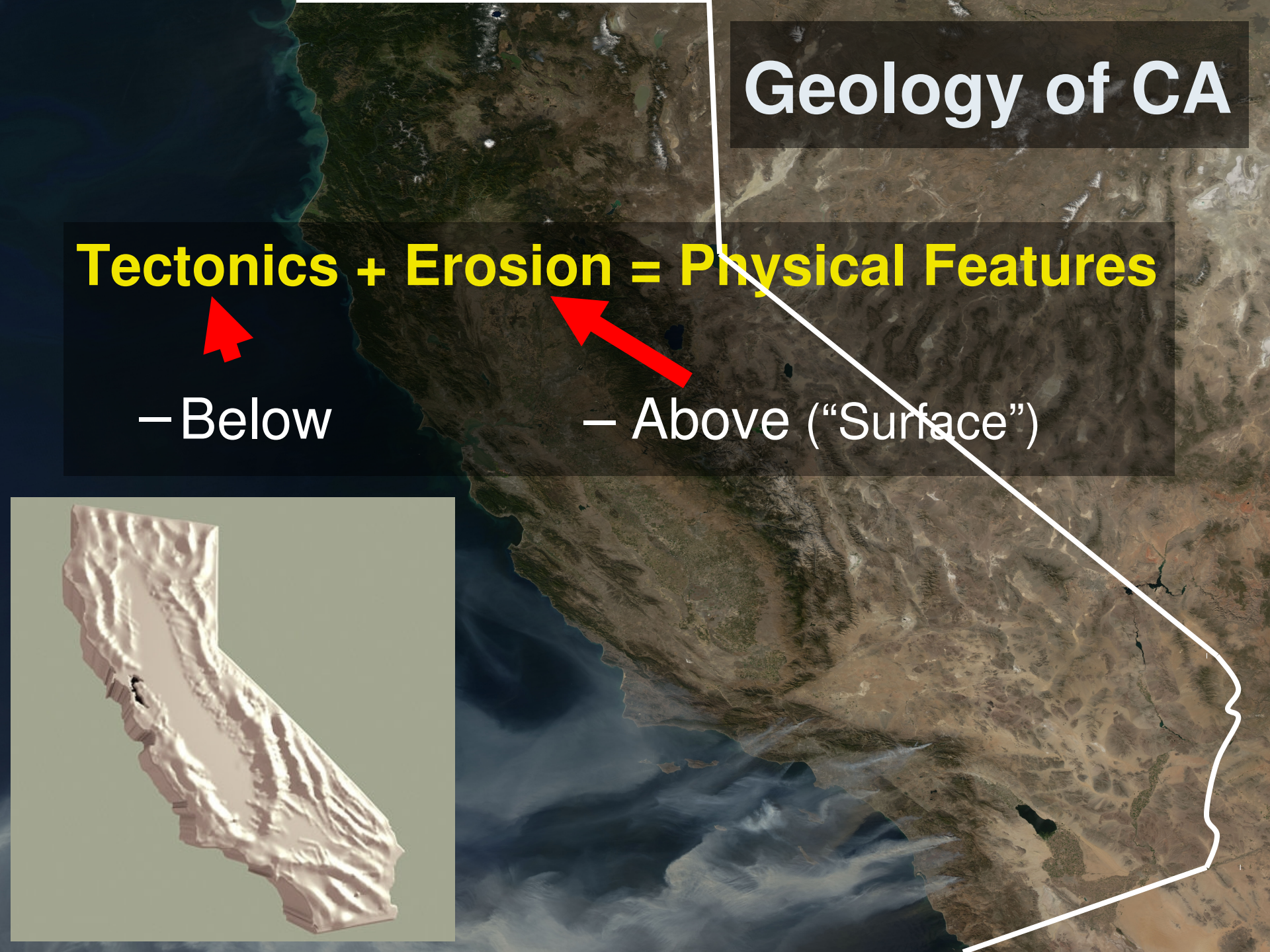
**Minerals, energy, soil, water.**

# Geology of CA

**Tectonics + Erosion = Physical Features**

– Below

– Above (“Surface”)



# CA mineral resources

- Mineral:

1. Natural
2. Solid
3. Organized crystal structure

- Resource:

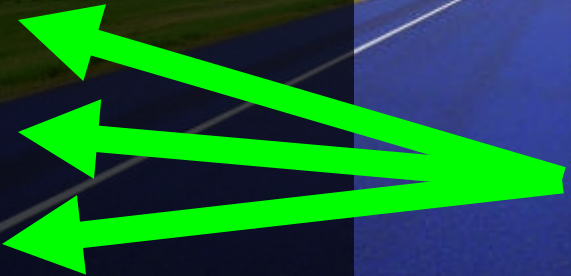
- Necessary item
- used to do something.



# CA's Minerals

- Sand
- Gravel
- Crushed stone
- Building stone
- Gold
- Silver
- Iron
- Clay

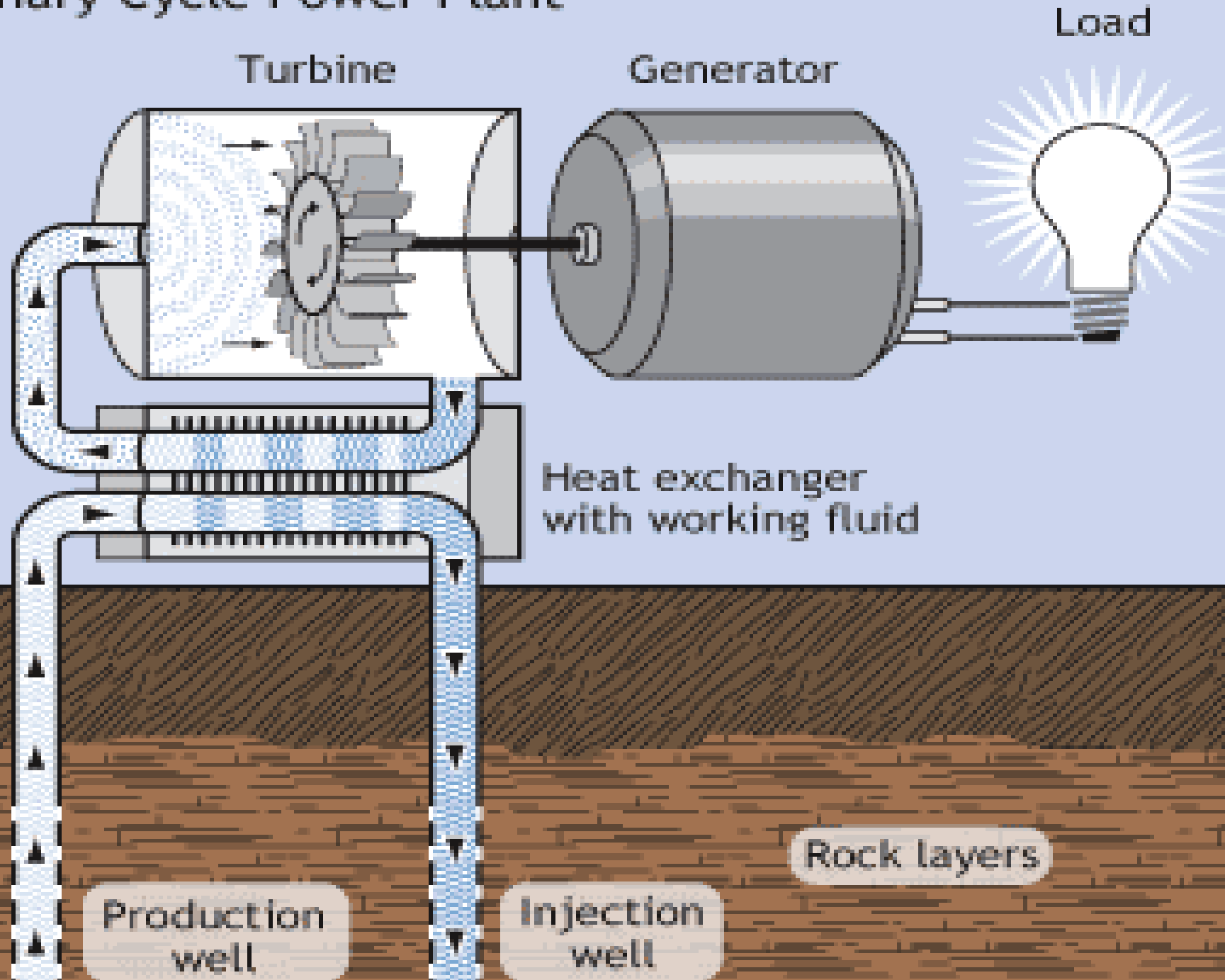
- Most Valuable Industrial Materials?
- Metallic Minerals?
- Nonmetallic Minerals?







# Binary Cycle Power Plant



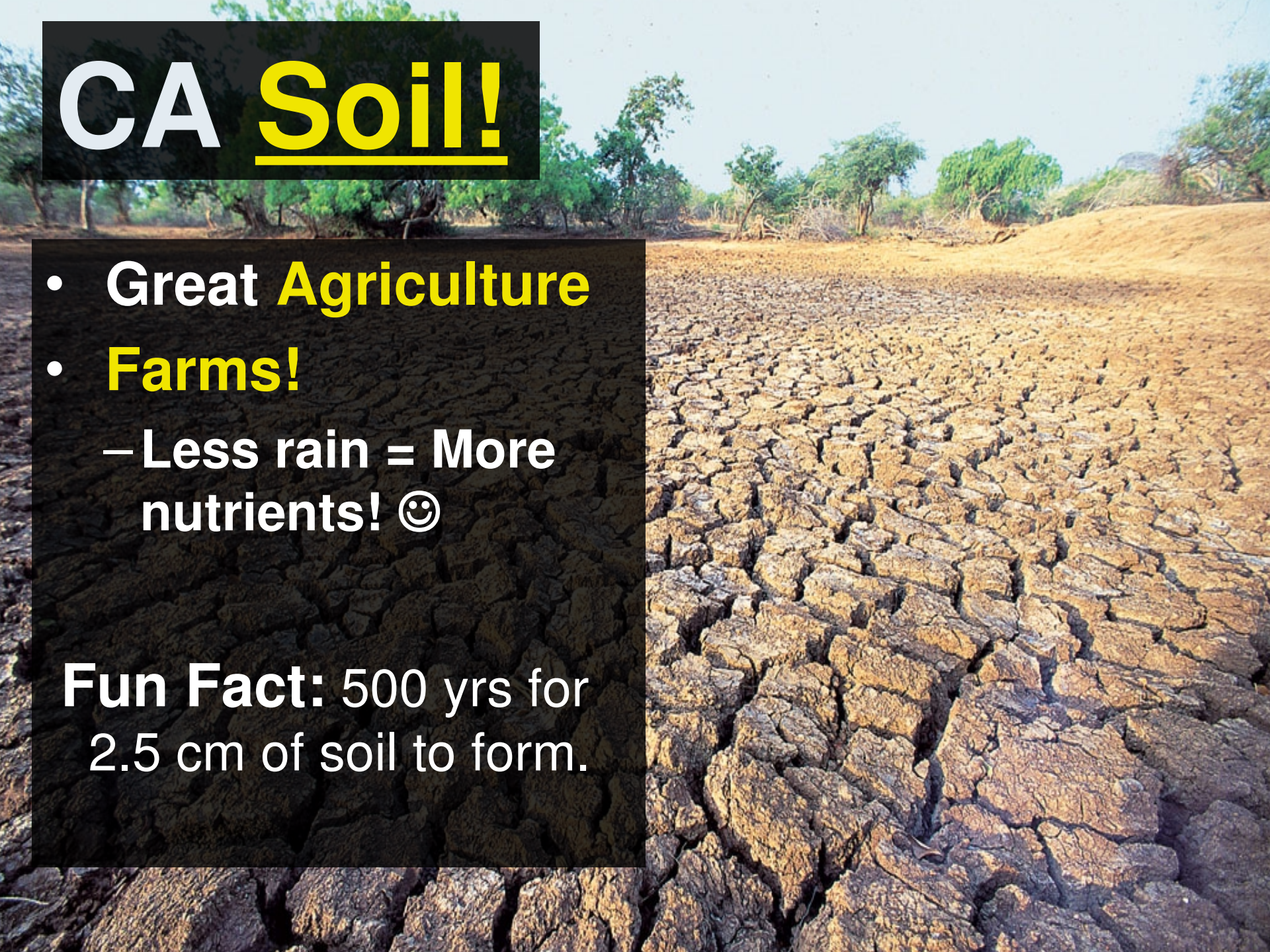
**Q:**

**What is CA's most important resource?**

# CA Soil!

- Great **Agriculture**
- **Farms!**
  - Less rain = More nutrients! 😊

**Fun Fact:** 500 yrs for 2.5 cm of soil to form.





# CA Aqueduct

- **Los Angeles** was a **Desert**
- **Big, fake, River**
- **Water from North → South**

