

# Warm-up

In the LeBron James Shoe example:

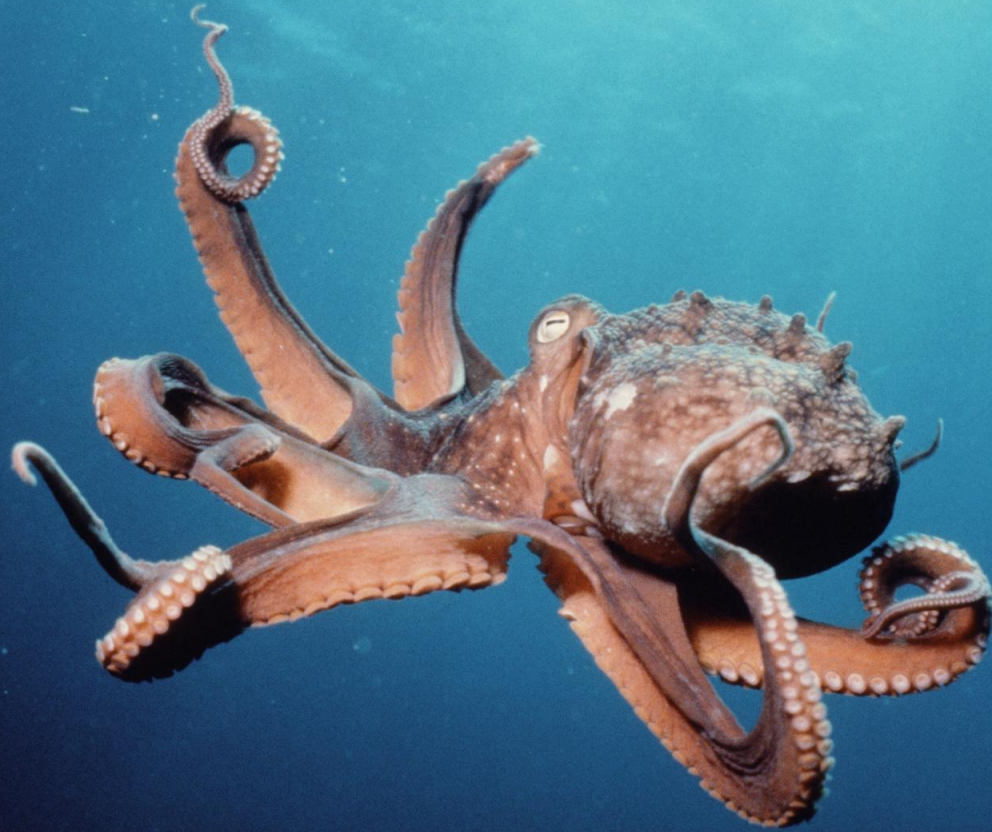
1. What was our **QUESTION**?
2. How did we research? (**OBSERVE**)
3. What was our **HYPOTHESIS**? (**GUESS**)
4. Explain our **EXPERIMENT**:
5. How did we arrange our data: (**ANALYSIS**)
6. What was our **CONCLUSION**?

# “What is Earth Science”



- Geology
- Geochemistry,
- Geophysics,
- Geobiology
- Paleontology
- Oceanography
- Meteorology
- Astronomy

- Group of sciences
- Describe Earth and...Space



**For Example:**

**Oceanography** - oceans and oceanic events

# Meteorology:

- Weather, Climate, & Atmosphere



A vibrant, multi-colored nebula with swirling clouds of gas in shades of blue, green, red, and orange. A bright star with a four-pointed diffraction pattern is visible in the upper right. A semi-transparent dark grey box is overlaid on the upper left portion of the nebula, containing a red 'X' and the text '(you are here)'.

**X** (you are here)

**Astronomy** - Study of the **Universe**

# Where are We?

The background of the slide features a variety of celestial bodies. On the left, a large, textured orange sphere represents the Sun. To its right and slightly above is a reddish-orange planet, likely Mars. Further right is a small, grey, spherical moon. Below the Sun is a blue and white planet, Earth. To the right of Earth is a large, light blue planet, likely Jupiter. Below Earth is a yellowish planet with a prominent ring system, Saturn. To the right of Saturn is a light blue planet, likely Uranus. In the bottom left corner, there is a small, brownish planet, likely Venus. The overall scene is set against a black background, representing the vastness of space.

- Earth is one of **8 planets**
- Earth **Revolves** around the Sun
- **Sun + Planets = Solar System**

# Where did Earth Come From?...



# The Nebular Hypothesis

–Everything in our Solar System came from a HUGE, spinning, cloud of dust & gas.

Hypothesis?..

.

Nebula?...

“Nebula” = Cloud of dust & gas in Space



# Nebular Hypothesis:

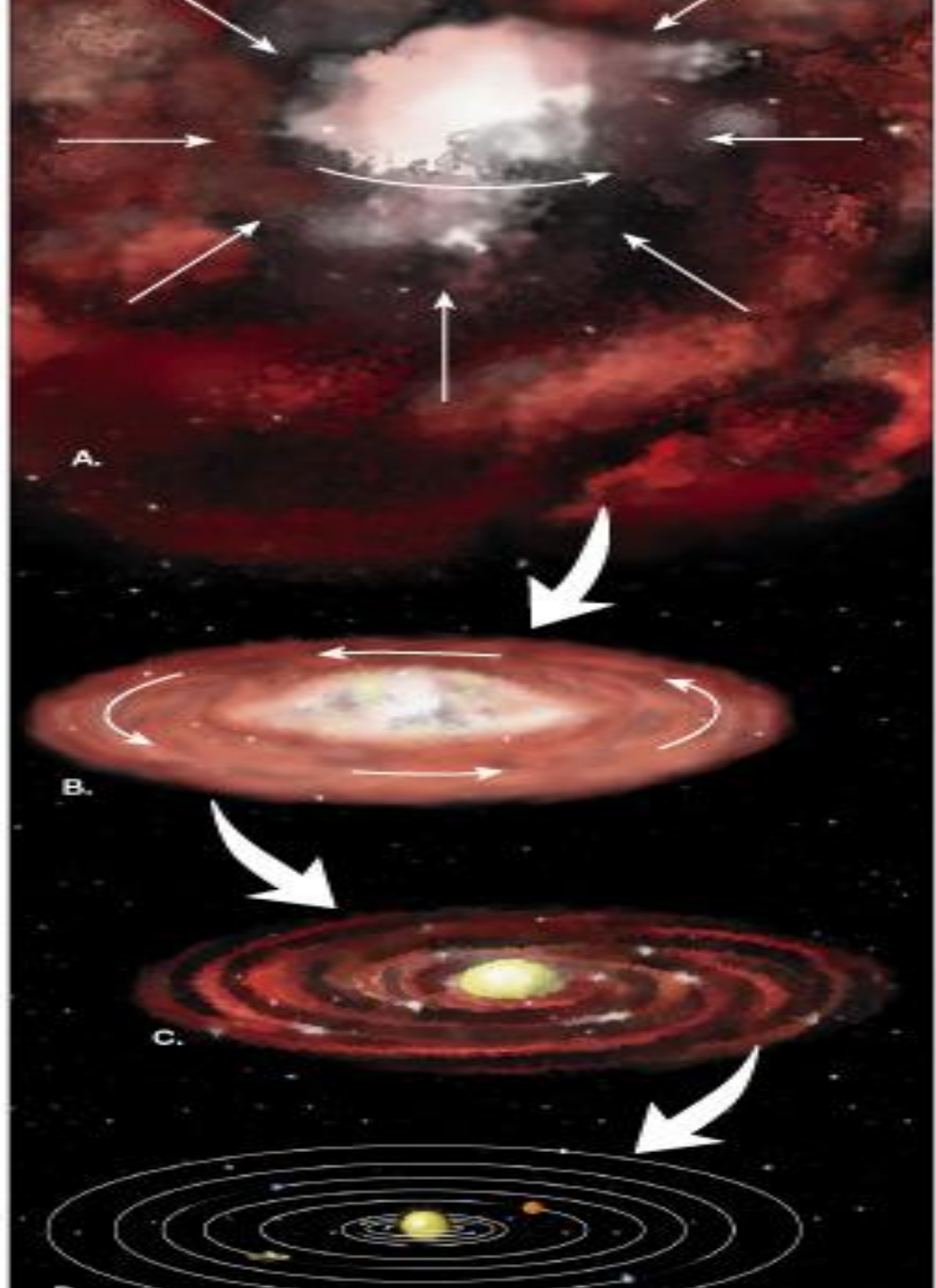
1. Nebula spun really fast
2. Flattened
3. Dust squishes together in middle
4. Forms **SUN**
5. **Other Solids** squish together and form planets

**1. Nebula**

**2. Spins...**

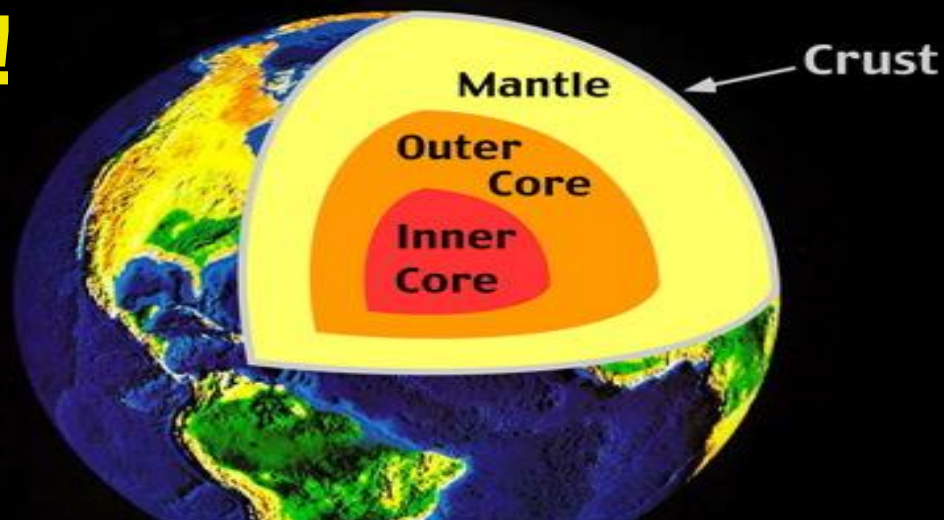
**3. Sun!**

**4. Planets!**



# Earth's Layers

- **Lighter Material = Outside Planets**
- **Heavier Material = Inner Planets**
- After Earth formed, interior melted
  - heavier elements sink to middle ↓
  - lighter elements float to surface ↑
- **Layers!**



# ASSIGNMENT:

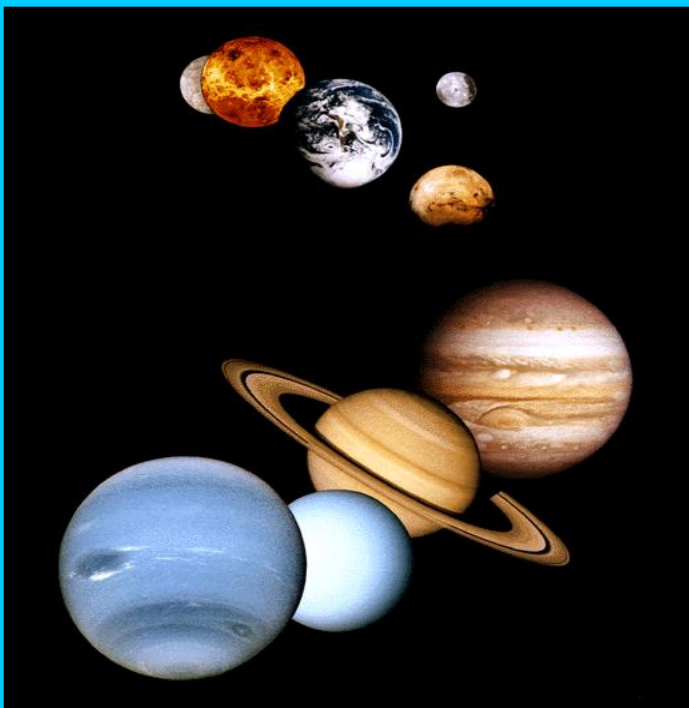
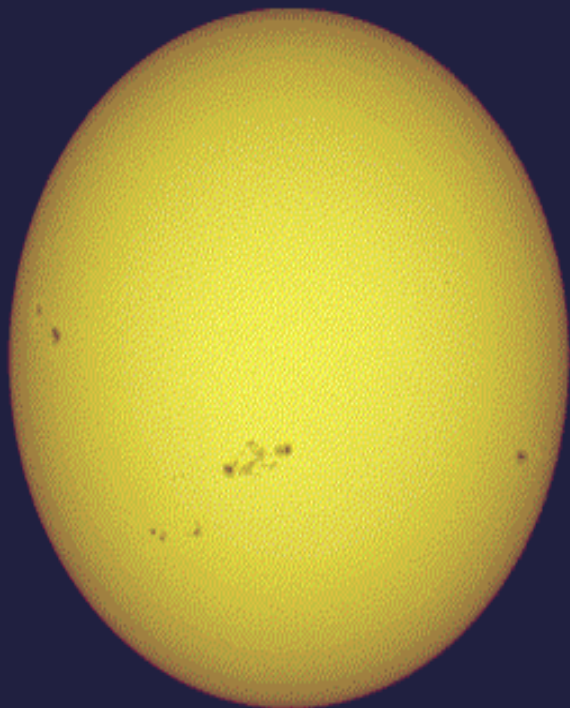
- Create a **COMIC POSTER: (15 pts)**  
Use page 4 of Text
- **6** Frames.
- **6** captions.
- **6 COLOR** drawings that illustrate each phase of Nebular Hypothesis
- **DUE: TURN-IN End of Period.**
- 5 pts = Captions
- 5 pts = Illustrations...use color!!!
- 5 pts = Effort



**FAIL**



**Squish**



# Assignment

- Read Chapter 1, Section 1 (pg. 2-5)
- Do Section 1.1 Assessment #1-7 (pg. 5)

