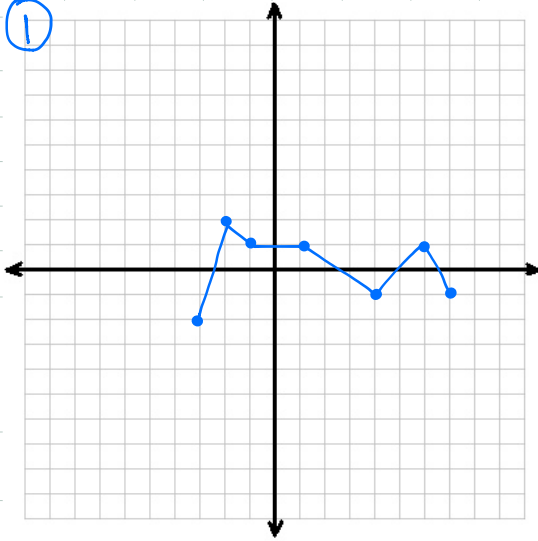


If the following is $f(x)$... Graph the following

①

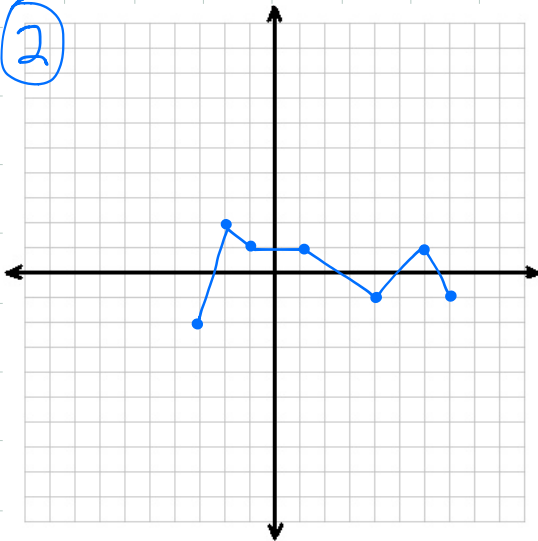


1. $f(1/3 x) - 1$ **do stretch then shift**

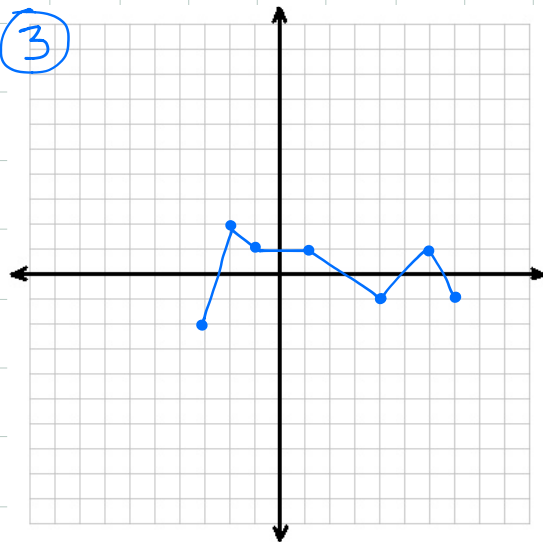
2. $-f(x + 2)$ **do shift then reflection**

3. $2f(-x) - 2$ **do stretch then reflection then **

②

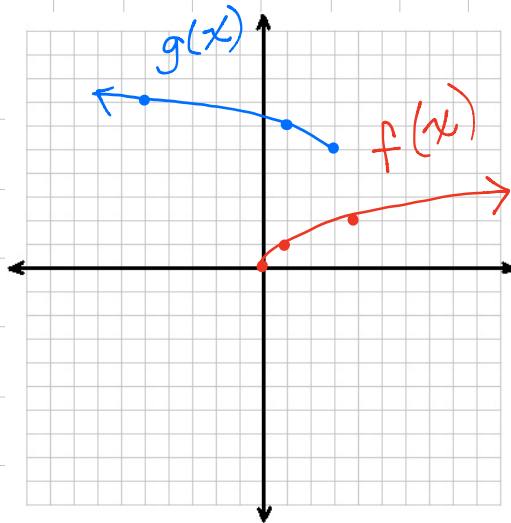


③

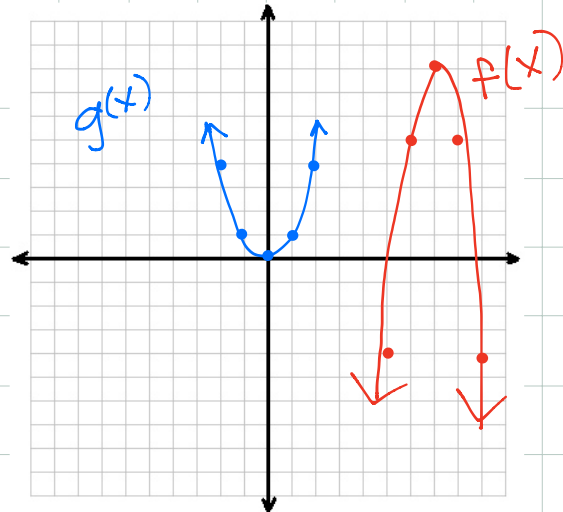


Write the equation of the transformed function (the blue $g(x)$ one)

4.



5.



Write the function from the description

6. A square root function that's vertically shrunk by a factor of $1/2$, shifted up 3, left 4 and is reflected on the y axis

7. An absolute value function $|x|$ that's horizontally shrunk by a factor of $3/2$, shifted right 4, down 3, and reflected on the x axis.

8. A parabola that's vertically stretched by a factor of 4, reflected on the x axis, shifted down 3 and right 2.