

Question 1 of 5

# What is a chromosomal mutation?

---

- A. alteration of a chromosome
- B. alternation of a cell wall
- C. changes in a cell sequence
- D. thinning of cell membrane



Question 2 of 5

What type of a mutation best describes the situation when a piece of a chromosome is removed?

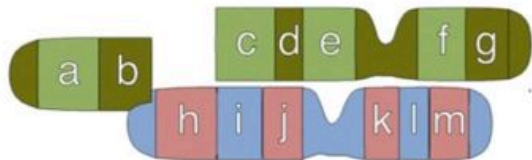
- A. addition
- B. exchanging
- C. deletion
- D. moving



Question 3 of 5

# What occurs in a type of mutation called translocation?

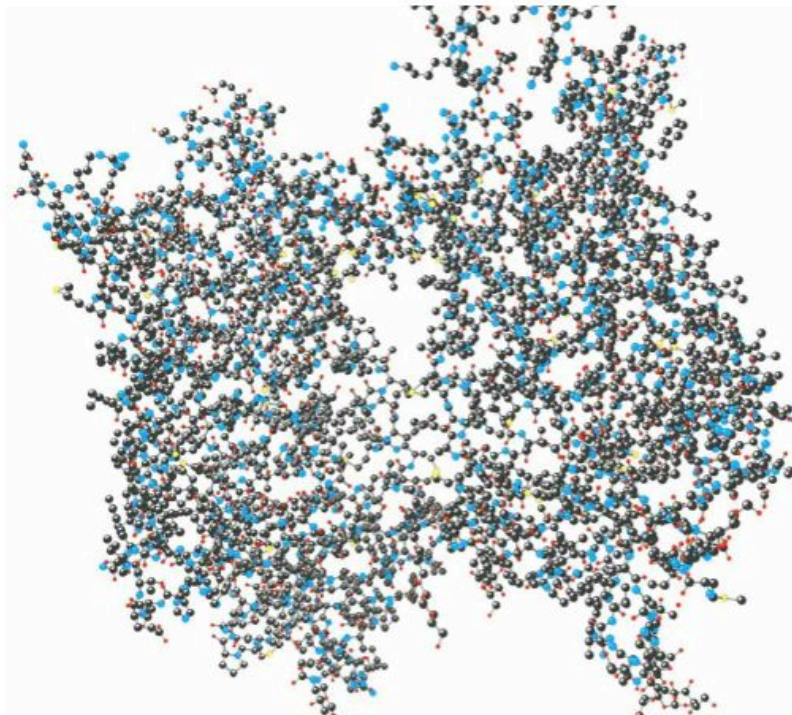
- A. part of a chromosome breaks off and attaches to a non-homologous chromosome
- B. a part of DNA is doubled
- C. the sequence of DNA is realigned
- D. chromosome stays unchanged



Question 4 of 5

DNA mutations may cause what type of problem?

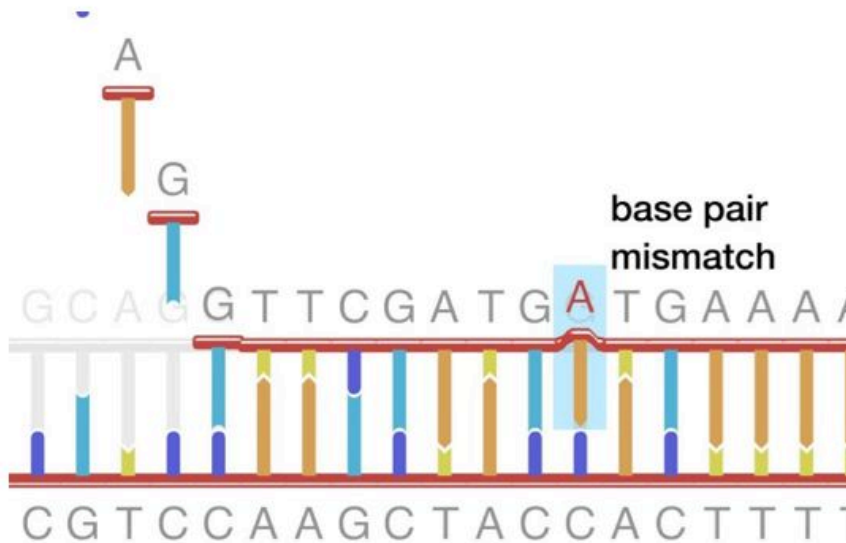
- A. realignment of cells
- B. incorrect formation of proteins
- C. growth
- D. changes in pressure



Question 5 of 5

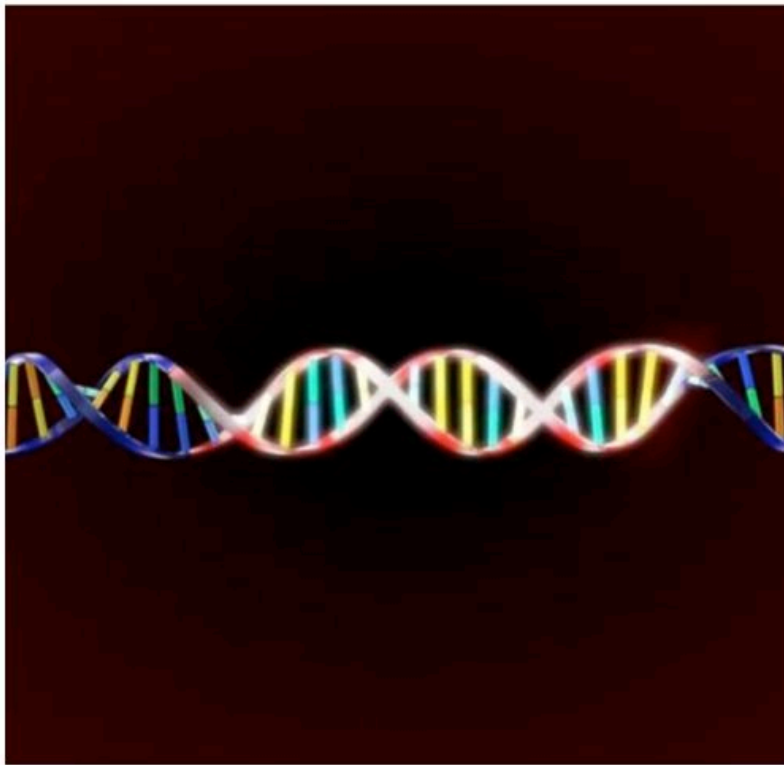
What is generally affected in a point mutation?

- A. part of the eye
- B. air entering the lungs
- C. an entire chromosome
- D. a nucleotide in a DNA sequence



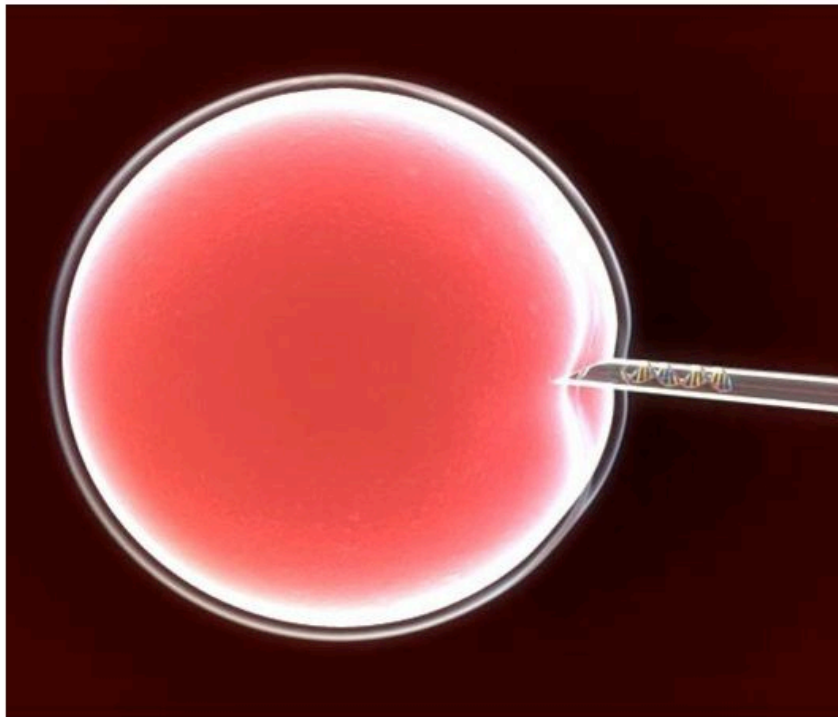
# Genetic engineering often involves:

- A.** changing global weather patterns
- B.** altering the DNA of an organism
- C.** changing the appearance of people
- D.** creating diseases



## Inserting a DNA segment from one organism into another results in:

- A. lethal organisms
- B. sterile organisms
- C. recombinant DNA
- D. vitamins



One of the useful results of work with recombinant DNA is the creation of:

- A. heat-resistant plastics
- B. new medicines
- C. stronger people
- D. soils



Organisms that have been altered by adding a gene from a different species are called:

- A.** transgenic organisms
- B.** identical
- C.** genetically superior
- D.** very large



# What is a genome?

- A.** all the genes in the universe
- B.** a slice of DNA
- C.** a sample of an organism's DNA
- D.** all the genes possessed by an organism

