

Lesson 6-1B - Solving systems by graphing

Answers (respuestas) **p.279 #2-12 evens**

2. No

4. Yes

6. (0, 0)

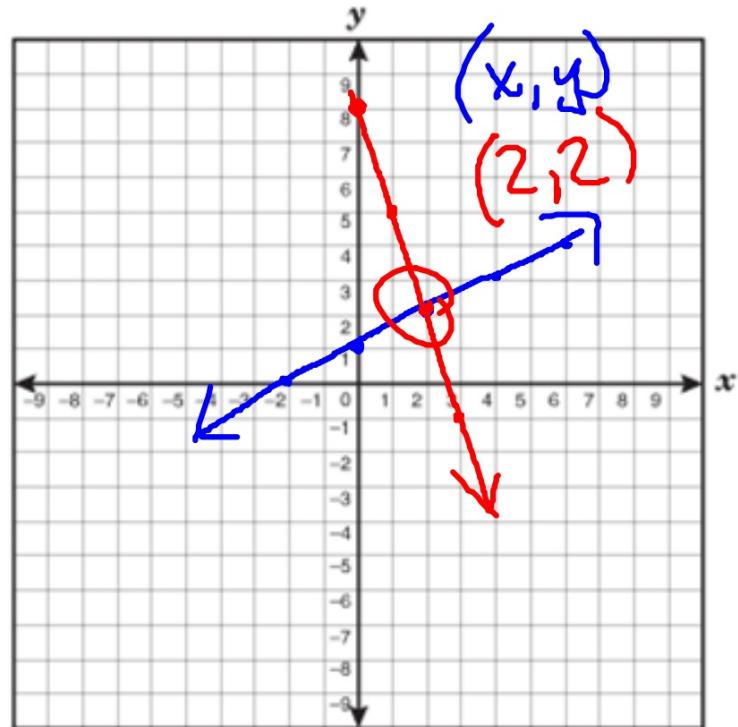
8. (1, 5)

10. (2, 2)

12. (2, 3)

Due Tuesday: p.267 #9, 14, 17, 18, 31, 34, 47, 50, 53, 54

10. $z = \frac{1}{2}(x) + 1$
 $z = -3(z) + 8$



1) Is $(0, 7)$ a solution to the system?
Show your work to receive credit.

✓ $(7) = 2(0) + 7$
 ~~$y = x + 6$~~

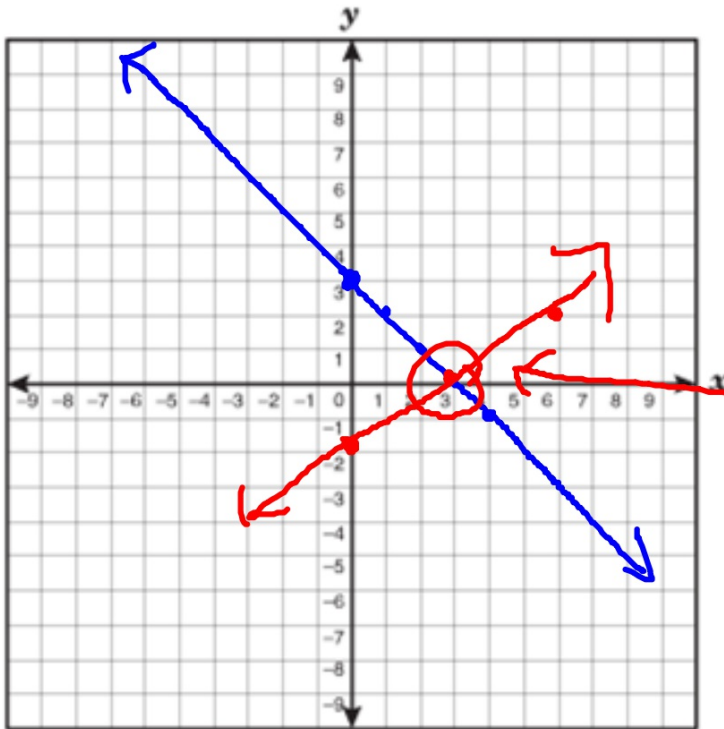
no

2) Find the solution to the system of equations by graphing.

$$y = -x + 3$$

$$y = \frac{2}{3}x - 2$$

Name:
Period:
Date:



$$y = -\frac{1}{3}x + 3$$
$$y = \frac{2}{3}x - 2$$

$(3, 0)$
x, y

~~$(0, 0)$~~ ?