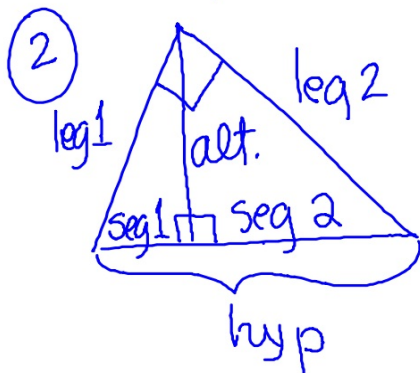


Ch 8 Review

- ① x is the geometric mean between a & b
if $\frac{a}{x} = \frac{x}{b}$



$$\frac{\text{seg 1}}{\text{alt}} = \frac{\text{alt}}{\text{seg 2}}$$

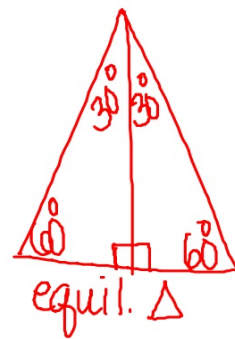
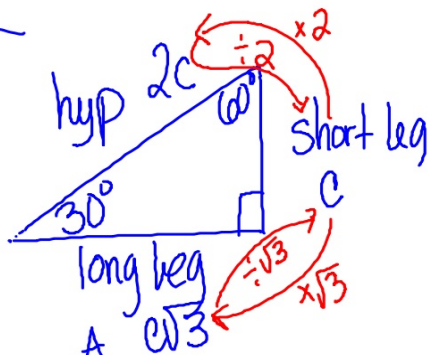
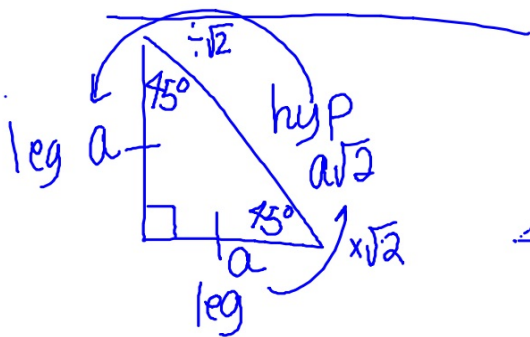
$$\frac{\text{hyp}}{\text{leg 1}} = \frac{\text{leg 1}}{\text{seg 1}}$$

$$\frac{\text{hyp}}{\text{leg 2}} = \frac{\text{leg 2}}{\text{seg 2}}$$

alt. is geo. mean
between segments of
hyp.

leg is the geo. mean
between hyp. & seg.
of hyp. adjacent to leg.

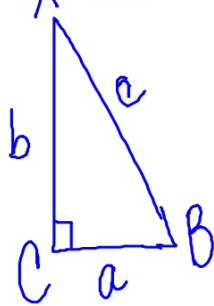
③ Special Rt Δs



④ Trigonometry

S^o C^A T^o
H^A H^A T^A

\sin^{-1} use to find \angle



$$\sin B = \frac{b}{c} \quad \frac{\text{opp leg}}{\text{hyp}}$$

$$\cos B = \frac{a}{c} \quad \frac{\text{adj. leg}}{\text{hyp}}$$

$$\tan B = \frac{b}{a} \quad \frac{\text{opp leg}}{\text{adj leg}}$$