



Historical Highlights

Fr. Luke Sheehan O.F.M. Cap.

+February 11, 1937

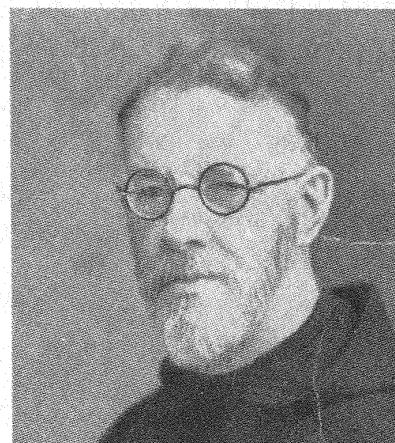
In February of 1910 Brothers Thomas Dowling and Luke Sheehan arrived in Eastern Oregon. The land was wild and sparsely populated, still part of the American frontier.

After a long and miserable stagecoach ride, Luke arrived in the town of Bend. Luke soon discovered....most of his parishioners did not live in town, but were scattered far and wide over the thousands of miles

One very cold night he found himself in the wilderness with neither food nor blanket. The Lord provided, however, for he came upon a cowpuncher, who was kind enough to share with the friar his frugal meal (a sourdough biscuit) and part of his bedroll. Someone later described Luke's parochial ministry:

He has enjoyed the comfort of a night in the open air. He has had sick calls to the remotest part of his tiny parish...on one occasion he walked for 24 hours to reach home in time for Sunday Mass, and gladly did he forget his hunger and fatigue at the pleasure of giving his people the consolations of our holy religion."

In gratitude to our brother, Luke, and the friars of the Mother Province of St. Patrick, please pray one *Glory be to the Father*



In Memory of
Father Luke Sheehan, O. M. Cap.
PASTOR OF ST. FRANCIS
OF ASSISI CHURCH
BEND, OREGON, 1910-1937
Born in Cork City Feb. 28, 1873
Entered Capuchin Order
Feb. 2, 1889
Ordained Priest July 2, 1896
Died at Hood River Feb. 11, 1937
Buried in Pilot Butte Cemetery,
Bend, Oregon, Feb. 17, 1937

Excerpt: (Barbato, OFM Cap: In the Land of the Pioneer, 1985)