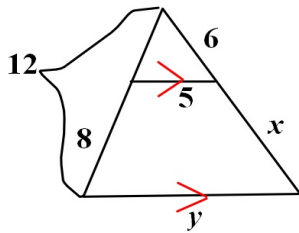


7-6 Proportional Lengths

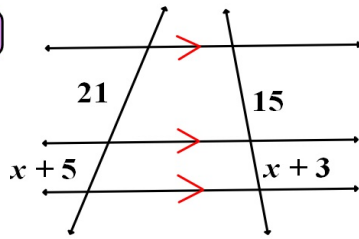
std. 5.0

ex. 1



find  $x$  and  $y$

ex. 2



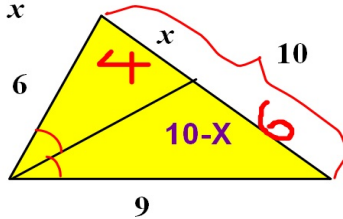
find  $x$

7-6 Proportional Lengths  
(continued)

January 11, 2012

std. 5.0

ex. find  $x$



$$\frac{2\cancel{6}}{3\cancel{9}} = \frac{x}{10-x}$$

$$20 - 2x = 3x$$

$$20 = 5x$$