

## Fetal Pig Questions

### 1. external anatomy

**How is their age (length of gestation) determined?**

**How long does full gestation take?**

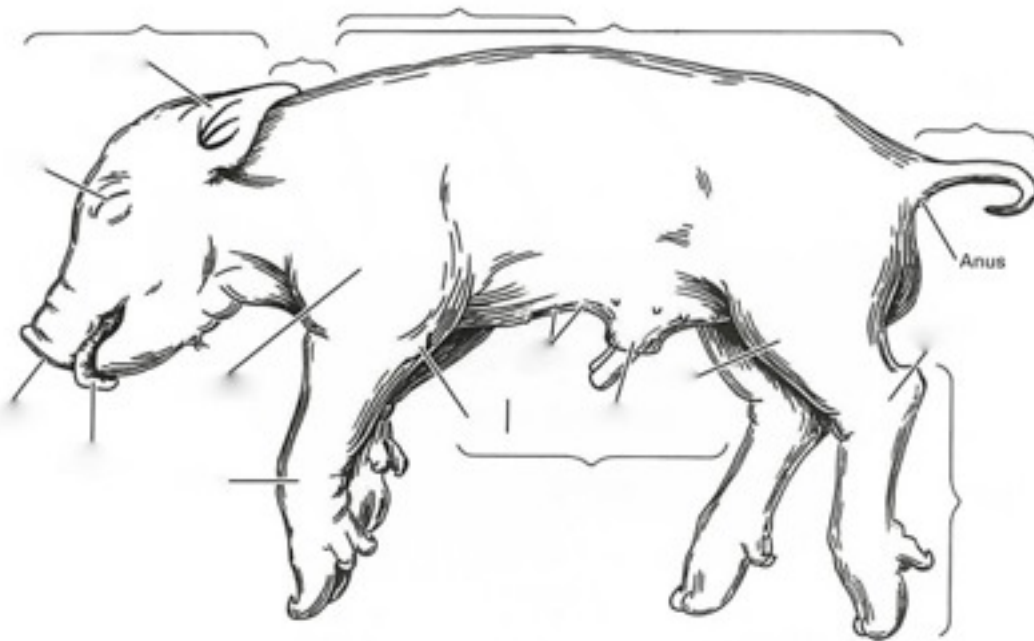
**Approximately how many piglets does a sow have in a litter?**

**Is a pig a biped or quadruped?**

**Are pigs herbivores, carnivores, or omnivores?**

**Why is the fetal pig a good specimen to dissect?**

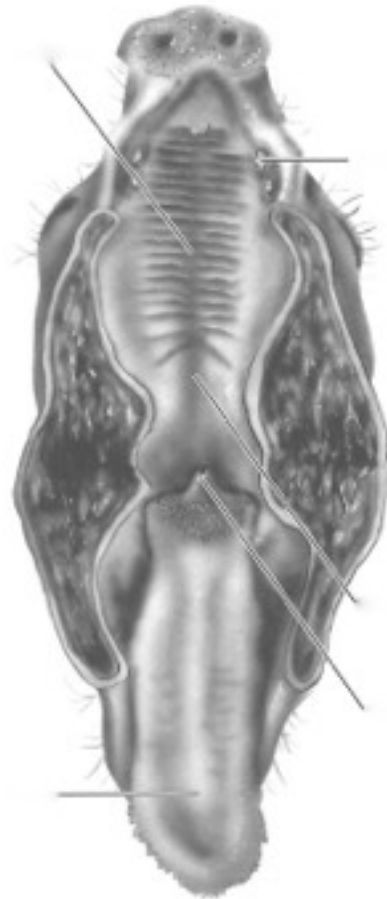
**Label the following drawing:**



**How long (metric) is your fetal pig?**

**What is the age of your fetal pig?**

**How many toes are present on each foot?**



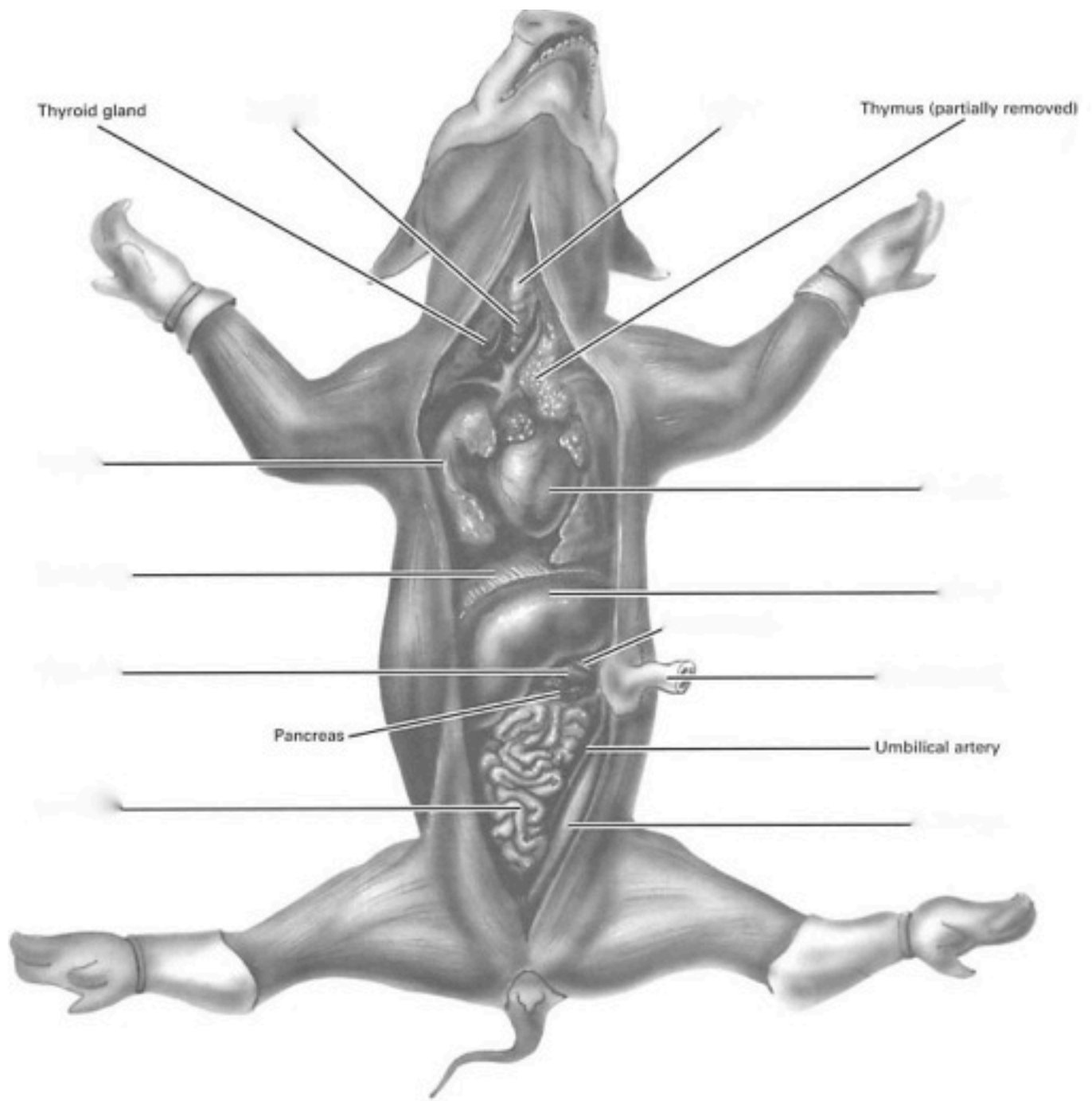
2. digestive system

**Where does the digestive tract start & end?**

**What is the purpose of saliva?**

**What is the function of the epiglottis?**

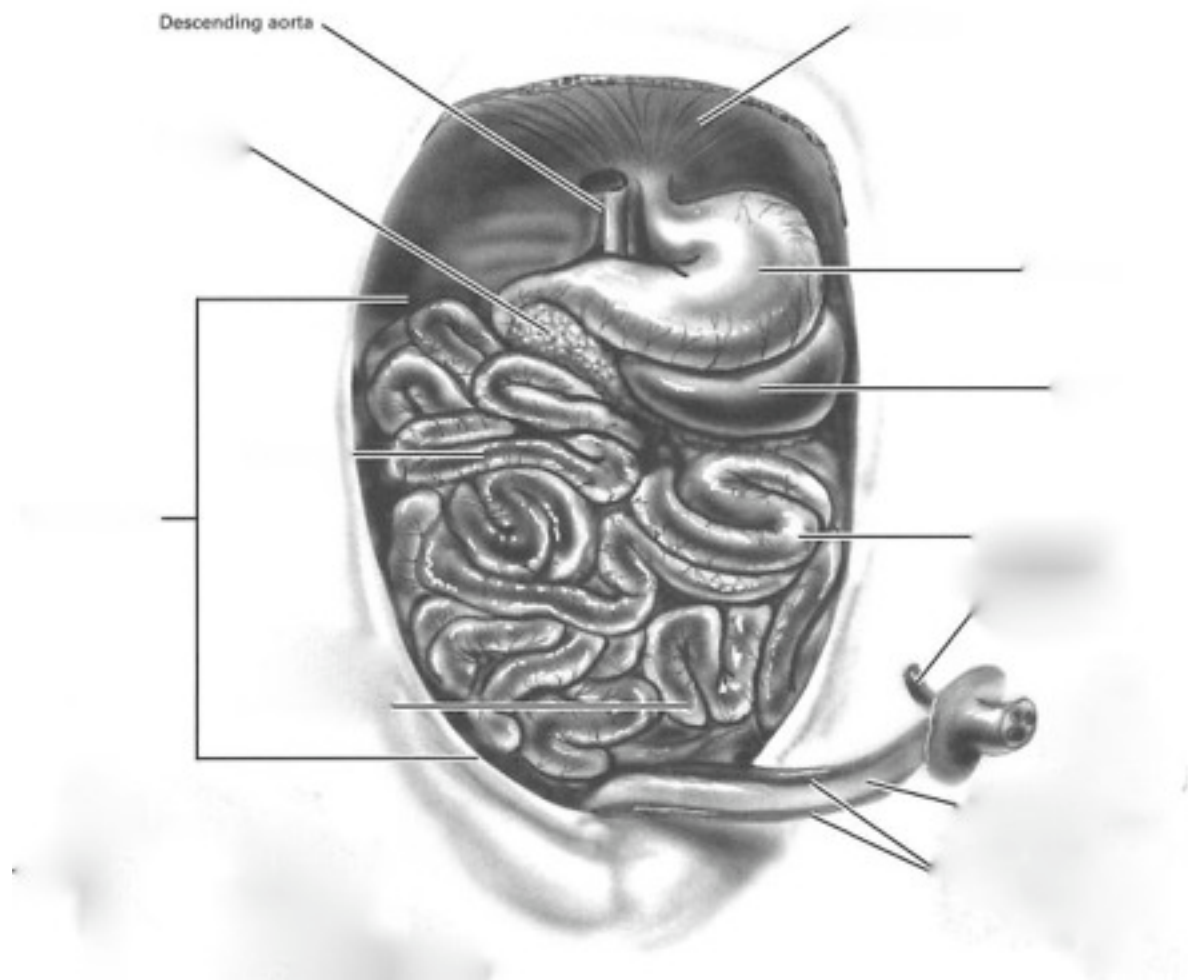
**Fetal pigs receive nourishment from their mother through the**



**How many lobes are there to the pig's liver?  
Give the function?**

**Give the function for:  
gall bladder?  
pancreas?**

**Name the 1st section of the intestine & give its function.**



**Food leaves the stomach as a soupy, partly digested material called**

**Another name for the large intestine is  
Function?**

**Length of small intestine (cm)**

3. respiratory system

**The lungs are found in what body cavity?**

**Name the tissue that covers and protects the lungs.**

**Give the function of the larynx.**

**What keeps the trachea from collapsing?**

**Where is the diaphragm & give its function.**

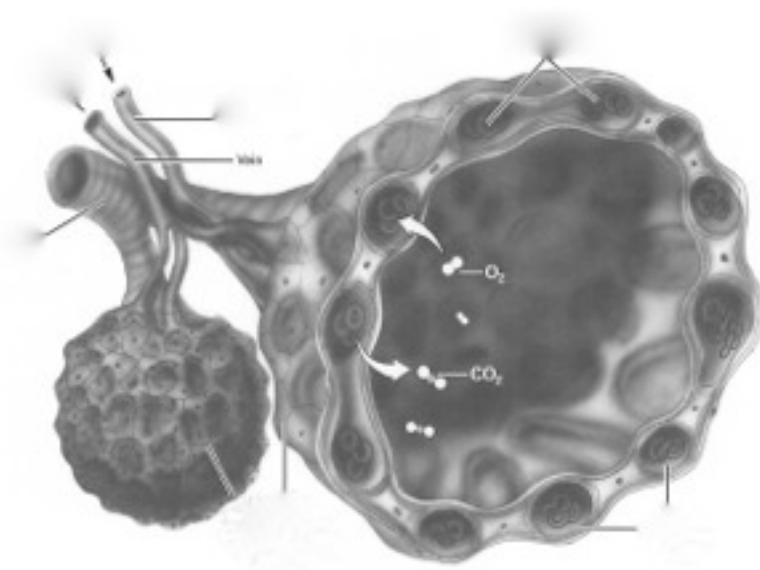
**Name the large tubes that enter the lungs.**

**Name the smaller tubes that branch from these**

**Name the air sacs for gas exchange**

**Why do the lungs appear collapsed in the fetus?**

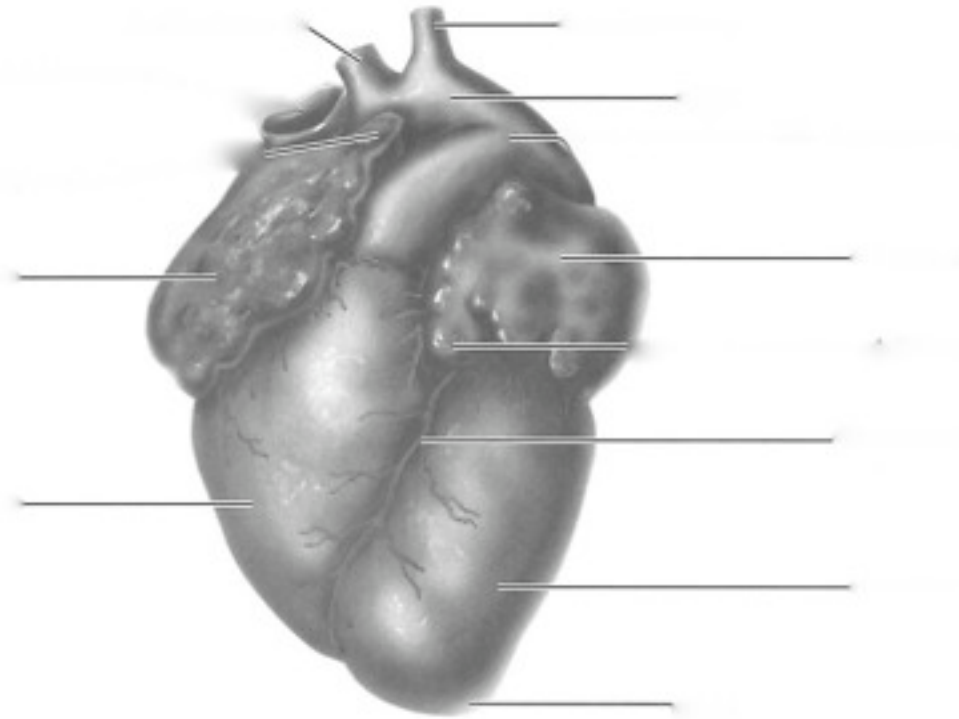
**Label the following diagram:**



**4. circulatory system**

**What is the pericardium?**

**What differences between the atria and the ventricles can you feel with your fingers?**



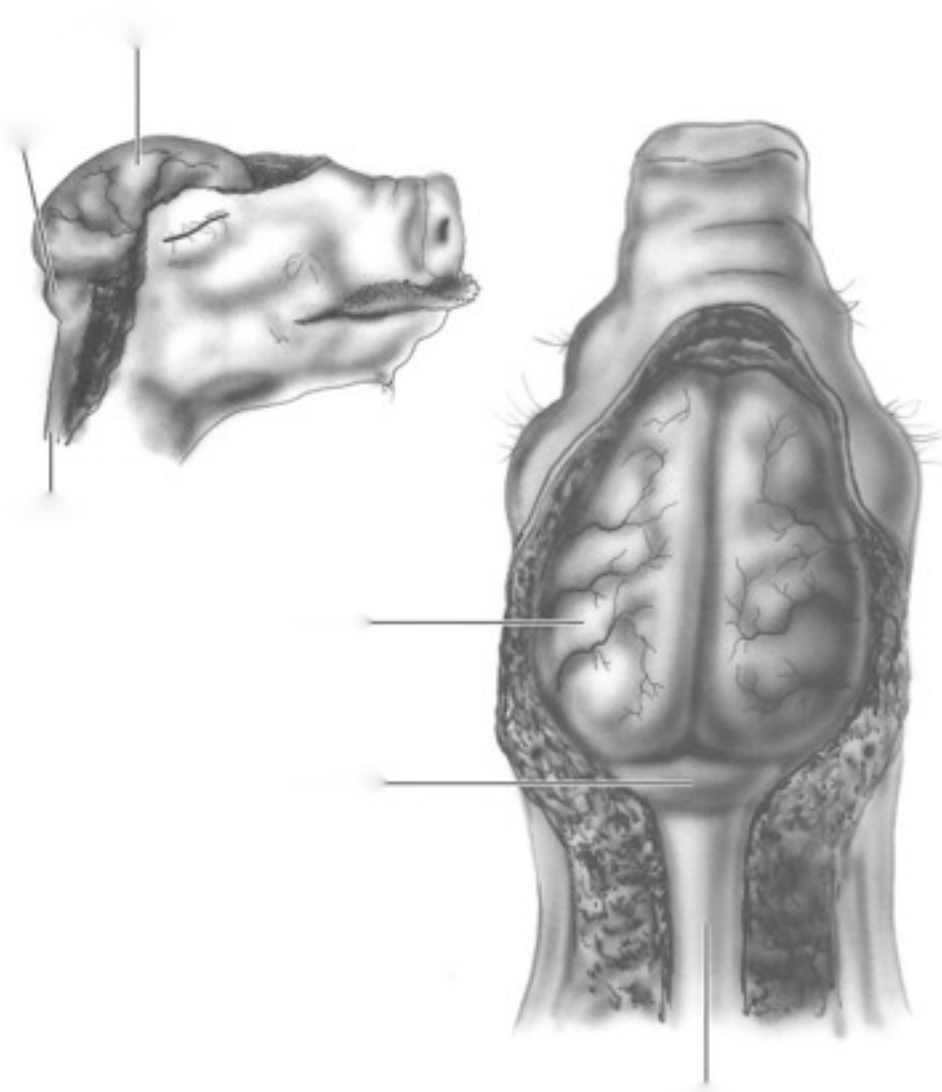
**What is the function of coronary circulation?**

**What results when coronary circulation is prevented in humans?**

5. nervous system

**Name the protective membranes covering the brain.**

**The olfactory lobe at the front of the brain controls what?**



**What part of the skeletal system protects the brain?**

**Name the largest area of the brain?**

**How many hemispheres does this lobe have?**

**Give the function of the following:**

**Cerebrum?**

**Cerebellum?**

**Medulla oblongata?**

**Spinal cord?**

