

## Intermolecular Forces

I. Melting/Boiling Points and depend on

II.

A. Not to be confused with \_\_\_\_\_ such as \_\_\_\_\_

III. First, let's review

A.

B.

III. A \_\_\_\_\_ when \_\_\_\_\_

IV. Therefore, \_\_\_\_\_, the \_\_\_\_\_ determine what state something is in at room temperature.

V. There are three types of intermolecular forces:

A.

B.

C.

1. This is \_\_\_\_\_ It's an \_\_\_\_\_

2. This IMF is strong because of the \_\_\_\_\_ even distribution of e-

VI. At the same temperature, \_\_\_\_\_ intermolecular forces and \_\_\_\_\_

VII. The \_\_\_\_\_

A. Because it takes \_\_\_\_\_

VIII. IMF and size.

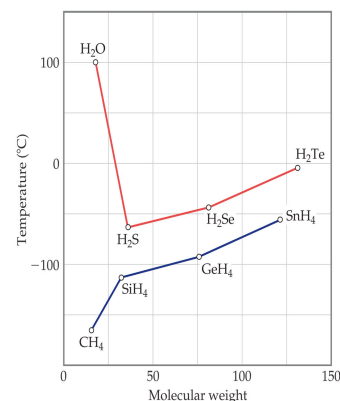
A. The more polar something is, the stronger its IMF.

B. \_\_\_\_\_ depends on the number of electrons.

C.

D. Thus, the \_\_\_\_\_ (because it is more polarizable).

IX. Examples: What forces of attraction are present in the following molecules?



## Types of Solids

I. Two types of arrangement of solids

A. \_\_\_\_\_ solids: particles exist in a \_\_\_\_\_

1. \_\_\_\_\_: the \_\_\_\_\_ of a crystalline solid

2. \_\_\_\_\_: solid crystalline structures that include water.

a. Example: CuSO<sub>4</sub> • 5 H<sub>2</sub>O

3. Examples: snow, salt, gemstones

B. \_\_\_\_\_ Solids: substances that appear solid but are \_\_\_\_\_

1. Examples: glass, some plastics.

II. Four Types of Solids

A. \_\_\_\_\_ Solid:

B. \_\_\_\_\_ Solid:

C. \_\_\_\_\_ Solid:

D.

1. Strong \_\_\_\_\_ extending through the solid.

2. Ex: \_\_\_\_\_ (memorize)

3.

4.

## Phase Diagrams!

- I. Plots (y-axis) v. (x-axis)
- II. Shows how
  - A. is the range of
  - B. is the range of
- III. Point that
  - A. These are the conditions where
- IV. Point where

