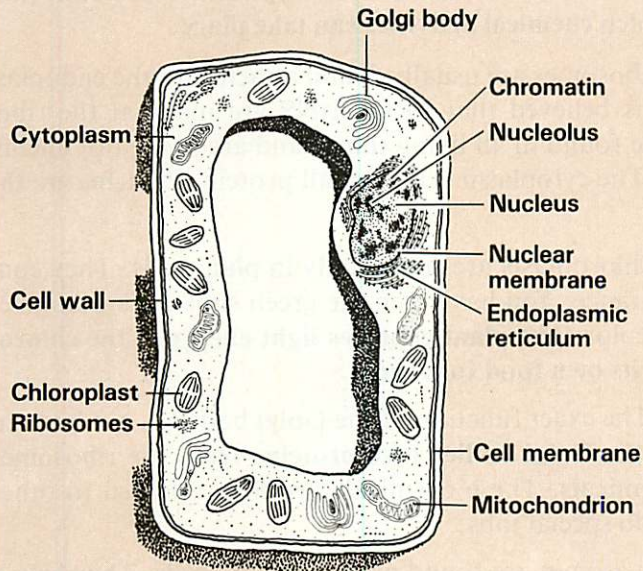
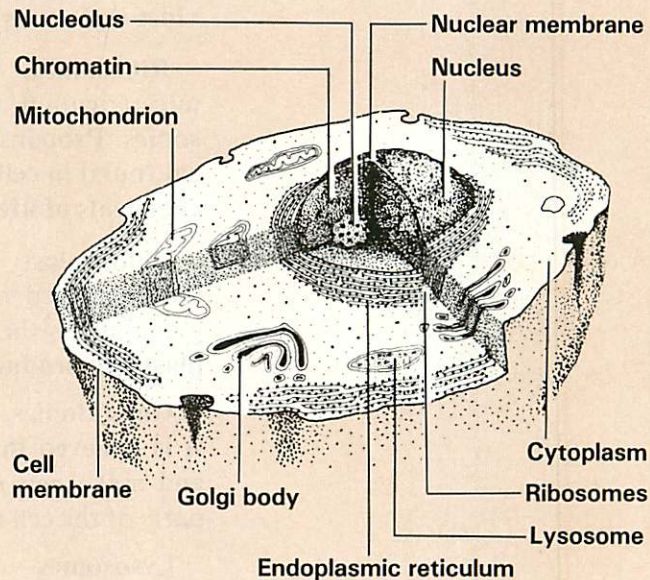


animal cells. Plant and animal cells are not alike.
 7 The cells drawn below do not exist. The sizes of some of the organelles are not correct. The two cells are an artist's drawing showing all the organelles that could be in a cell. The make-believe cells have been drawn to represent all cells and to help you to study the cell.

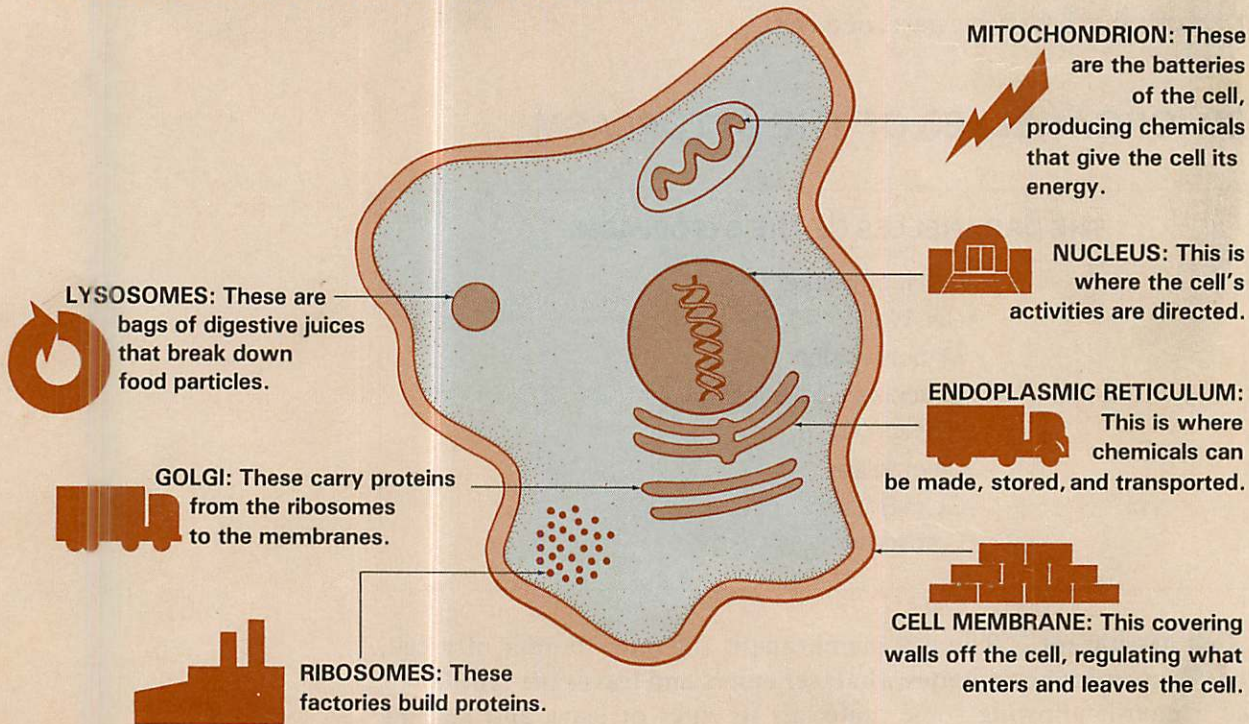
THE ORGANELLES OF A PLANT CELL



THE ORGANELLES OF AN ANIMAL CELL



THE CELL: SOME PARTS AND THEIR FUNCTIONS



Cell Wall. Only plant cells have a cell wall outside of the cell membrane. The cell wall is not living. **It is a rigid wall that gives the cell protection, support, and shape.** When you cut wood, it is mostly cell wall that you are cutting. It is the cell wall that Robert Hooke saw when he discovered the cell.

Mitochondrion. The mitochondrion is the powerhouse of the cell. **Chemicals from food are broken down and energy is released at the mitochondrion.**

Endoplasmic Reticulum. The endoplasmic reticulum is a network of flattened tubes. **It is believed that the endoplasmic reticulum provides a place on which chemical activities can take place.**

Ribosomes. Ribosomes are usually found attached to the endoplasmic reticulum. It is believed that **PROTEINS** are made at the ribosomes. Proteins are found in all living things and are the major chemical found in cells. The cytoplasm is almost all protein. **Proteins are the chemicals of life.**

Chloroplast. Chloroplasts are found only in plant cells. They contain a colored substance. You have seen the green substance that gives green plants their color. **The plant captures light energy in the chloroplast and produces its own food for energy.**

Golgi Bodies. The exact function of the Golgi bodies is not known. **It is believed that the Golgi bodies take proteins from the ribosomes and make new chemicals.** These chemicals are then released to other parts of the cell to do special jobs.

Lysosomes. Lysosomes are found only in animal cells. **They help a cell break down, or digest, larger chemicals into smaller chemicals.**